



Expertise for the UNECE region

Results from expertise delivered in and to the UNECE region

Sonila Danaj, Sabina Gjylsheni, Kai Leichsenring, Anette Scoppetta

23 October 2025

EUROPEAN CENTRE FOR SOCIAL WELFARE POLICY AND RESEARCH

GENERAL
ASSEMBLY



2025

Outline

How do we provide expertise for the UNECE regions?

- ✓ Strategy development
- ✓ Policy reforms
- ✓ Comparative research
- ✓ Networking
- ✓ Information dissemination

What does it mean to provide expertise for the UNECE region?

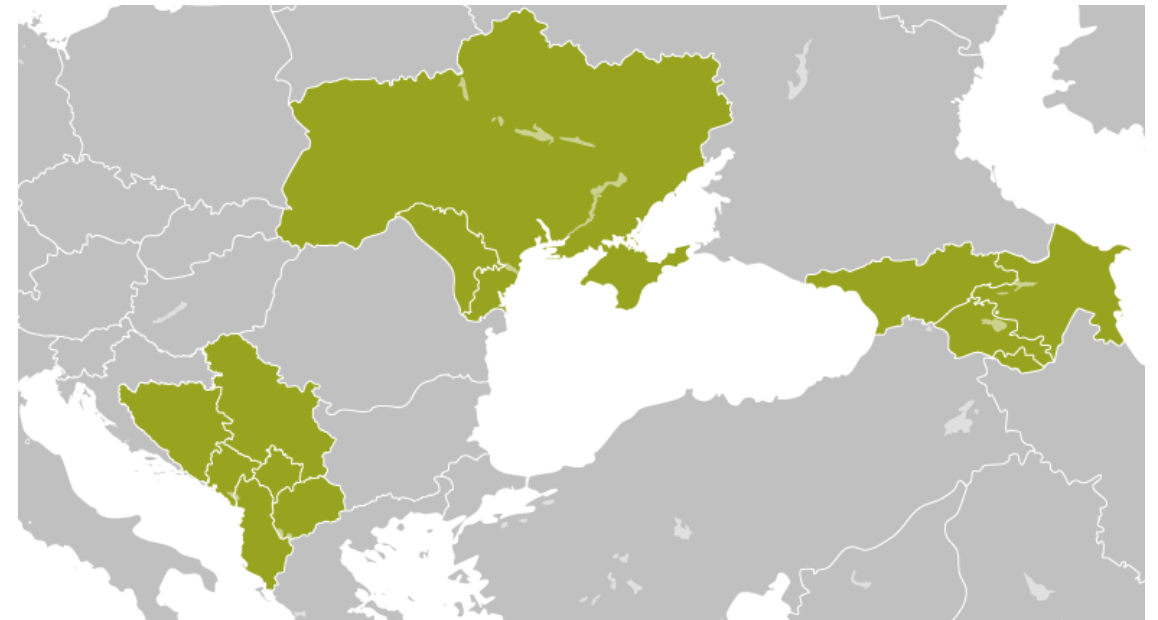
Geographical coverage

UNECE: United Nations Economic Commission for Europe

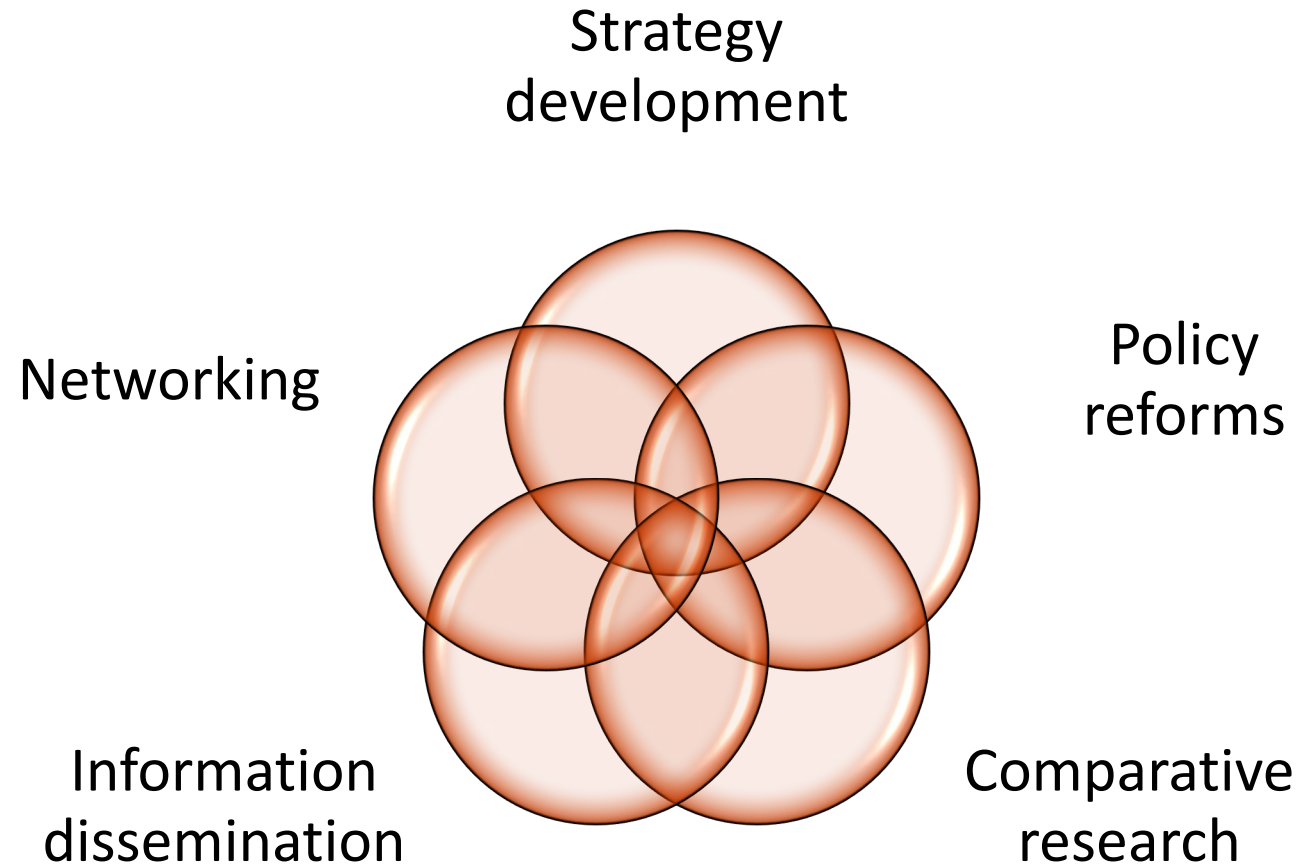


Bridging Function

BB countries: Western Balkans and Eastern Partnership



How do we provide expertise for the UNECE region?



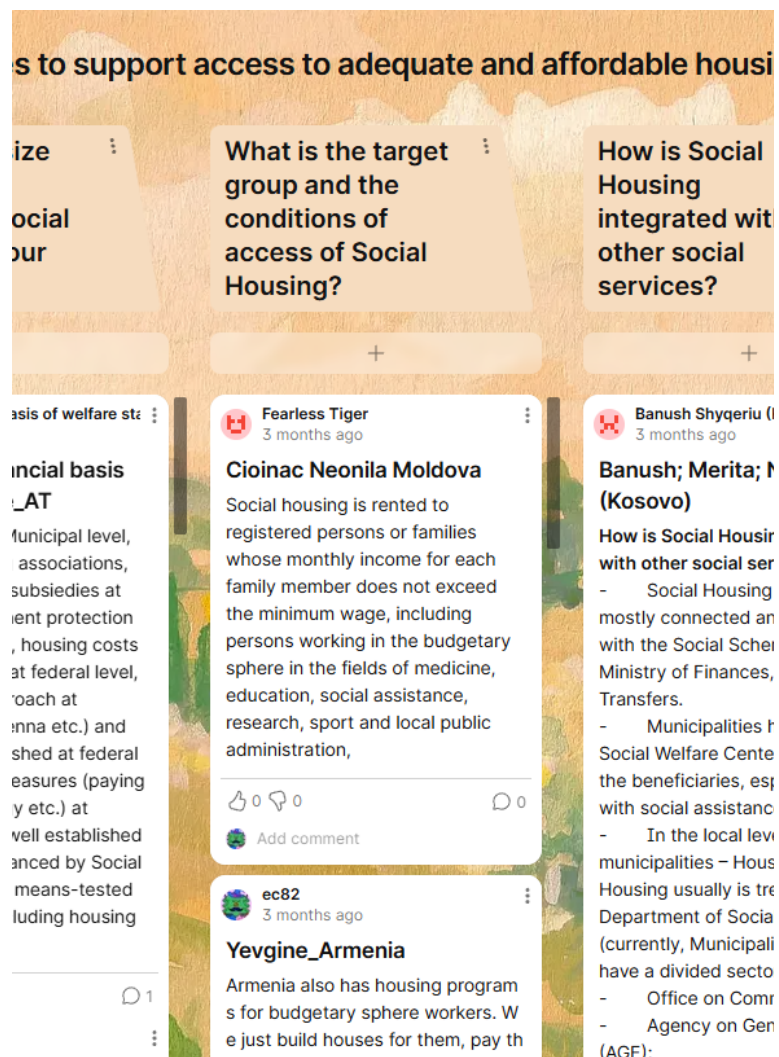


Strategy Development

The European Centre is representing the research community in the UNECE Standing Working Group on Ageing with the following tasks:

- Networking with relevant research societies
- Involvement in task forces (e.g. revision of **MIPAA regional implementation strategy**, drafting declarations)
- Co-organisation of the Joint Forum as a pre-conference (Joint Forum with NGOs) of Ministerial Conferences (2017: Lisbon, 2022: Rome, 2027: tba)
- Participation in the Annual Assembly, SWGA Bureau meetings and communication with the Secretariat
- Proposals for topics to be addressed (e.g. in Policy Briefs)
- Promote international cooperation

Policy Reforms



Example BB Peer/ Policy reviews:

- ✓ To enable BB countries to exchange at the same eye level about policy reforms, to receive input from other countries (UNECE) and to discuss what has worked and what has not worked during policy reform implementation.
- **2024: BB Peer Review in Social Welfare: Fighting Undeclared Work** (upon request from the Ministry of Finance, Labour and Transfers of the Republic of Kosovo, 5-6 December 2024, online)
- **2025: BB Policy Review in Social Welfare: Social housing policies to support access to adequate and affordable housing** (upon request from the Ministry of Labor and Social Affairs of the Republic of Armenia, 25-26 June 2025, online)

Policy Reforms

Example Bilateral labour market cooperation:

- ✓ **To recommend measures and align policies to European Standards**
 - In **2025**: Evaluation of the Employment Strategy of Montenegro in the form of a policy document review, assessing the status quo of the Employment Strategy of Montenegro.
 - In **2026**: follow-up on the evaluation with Montenegro



PROJECT

New project: Support services for bilateral labor market cooperation in the Danube region

25/03/2025 • Project

The European Centre is supporting the Austrian Federal Ministry of Labour and Economy (BMAW) in implementing bilateral labor market cooperation in the Danube region with the accession states Montenegro, Bosnia and Herzegovina, Serbia, Moldova and Ukraine with services such as studies, reviews and policy advise services during 2025-2029. Check out the project here.

Comparative Research I

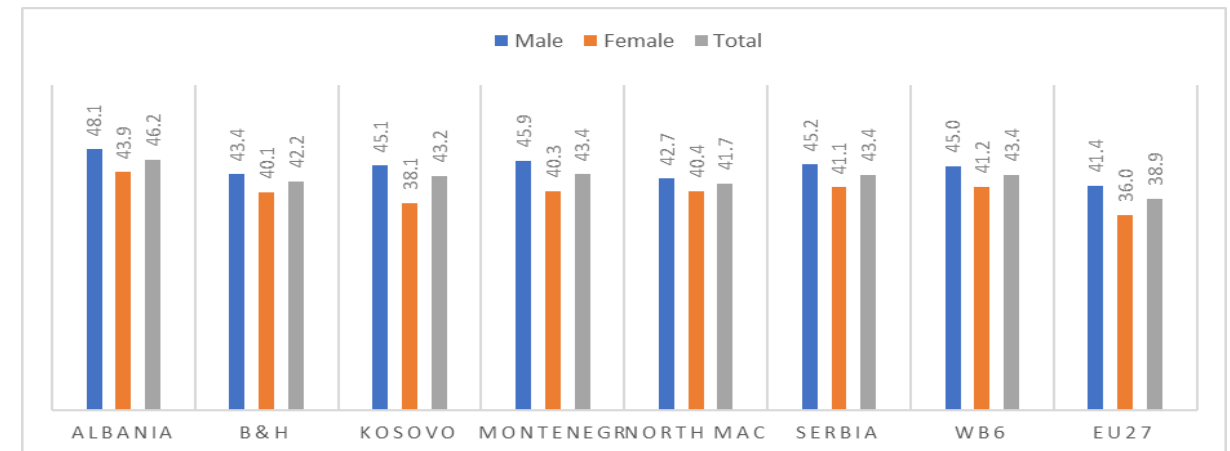
**Eurofound's
Job Quality and Working Conditions
in the Western Balkans**

&

**Greening of jobs and working conditions
in the Western Balkans:
three scenarios (forthcoming)**

- In collaboration with the Foundation for the Advancement of Economics (Serbia)
- Regional coverage: WB6: AL, BiH, KS, ME, NM, RS
- Covering labour market indicators, job quality dimensions, gender analysis, and the green transition in the WB labour markets
- Comparative analysis of WB6 results of the EWCTS 2021 as well as WB6 averages with EU27 results

**Average usual work hours per week in WB countries,
WB6 & EU27 by gender**



Source: Based on data from the European Working Conditions Telephone Survey 2021 included WB6, EU-LFS and other national statistics

Comparative Research II

Sustainable and socially just transnational sectoral labour markets (JUSTMIG) & Contracting chains and recruitment patterns of posted third-country nationals within the European Union (TCN Study)

- Transnational projects tracing labour mobility trajectories and the enabling labour migration policies between different groups of countries
 - JUSTMIG: three EU Candidate Countries (BiH, RS, UA), three first entry/intermediary EU countries (EE, SI, SK), and three EU destination countries (AT, FI, NL)
 - TCN Study: three TCN countries of origin (BiH, UA, BR) entering the EU mainly through three EU countries (PL, PT, SI)
- Research aims to understand the lived experiences of the (migrant) workforce including aspects like recruitment and working conditions, the policy context, sectoral characteristics, and the stakeholders' role in shaping these policies and experiences as well as the mobility pathways in an inclusive transnational approach:



Networking

We focus on Social Welfare Policy in the Bridge Building Region

The Eastern European Social Policy Network (EESPN) brings together public authorities, research institutions, and providers of services and facilities in social welfare policy focussing on the Bridge Building (BB) countries of:

- ✓ Western Balkans
- ✓ Eastern Partnership

[Check our BB region](#)

Our Bridge Building Region

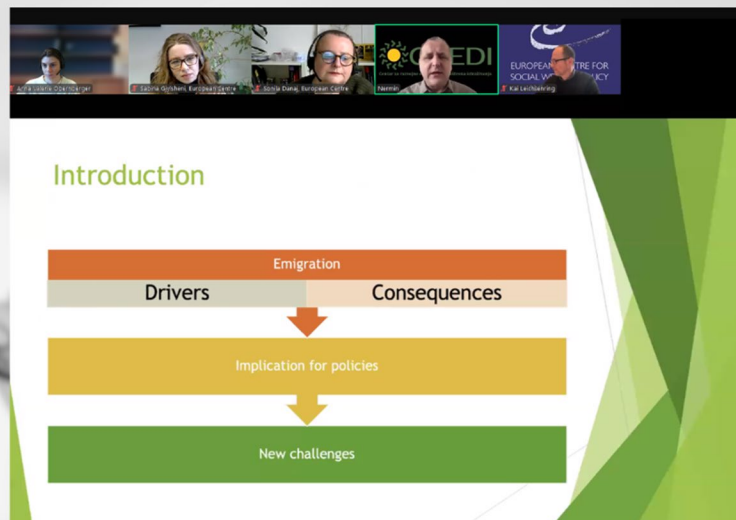


Facts

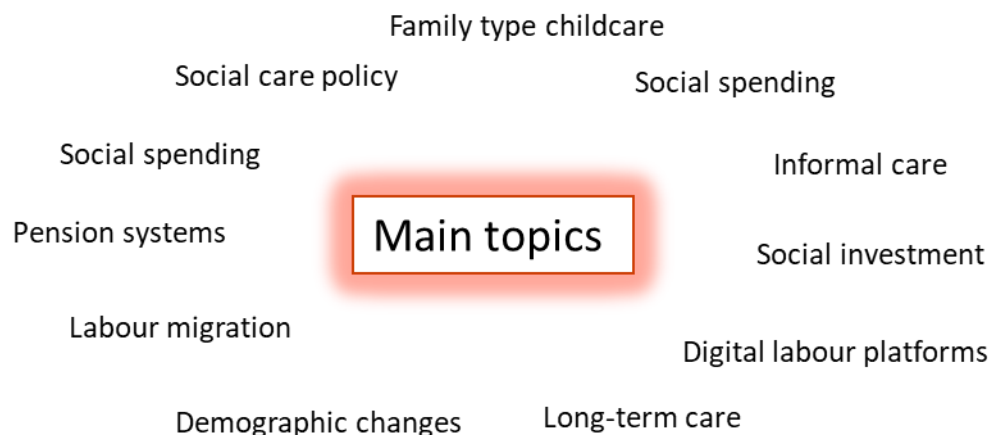
- **11 countries from the BB region**
- **EESPN subscribers**
 - **631 (Newsletter Mailchimp data)**
 - **934 (a new LinkedIn feature – 1 year)**

9th BBinar

Labour Migration:
Drivers, impact, and responses in the Western Balkans and Eastern Partnership countries



@European Centre for Social Welfare Policy and Research

**Information and Dissemination****Why BBinars?**

- To offer a possibility to exchange and learn among peers on social welfare developments in the **Western Balkans** and the **Eastern Partnership** countries.

Who is involved in the exchange?

- EESPN members, European Centre colleagues and a wider audience, such as research partners, policy makers from the region, policy experts, civil society organisations or from international organisations (e.g. ILO, WHO, European Commission etc.).

Activities 2024/2025

- Pension systems** in the Western Balkans and Eastern Partnership countries: between financial sustainability and adequacy (10th BBinar; 24/06/2025)
- Labour Migration**: Drivers, impact, and responses in the Western Balkans and Eastern Partnership countries (9th BBinar; 06/02/2025)

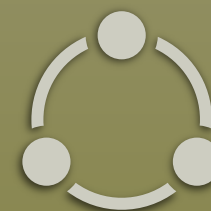
Conclusions



Our approach to providing expertise to the UNECE region ranges from **all-encompassing** initiatives at the UNECE/BB region levels, to **establishing linkages** through policy and research themes among various countries, to **individual** countries.



Our expertise is provided in **different, often intersecting, formats** including *strategy development, policy reforms, comparative research, networking, and information dissemination.*



Our initiatives are based on the principles of **eye-level exchange** and **mutual learning between the research, policy, and civil society communities** benefiting the **social welfare policy landscape** of the countries of the UNECE region.



Comments, questions and open discussion

Comments by NLOs

- Monika Austaller, Austria
- Ketevan Gohinashvili, Georgia
- Aygun Khalilova, Azerbaijan

General discussion

- How do you perceive the work of the European Centre in relation to social policies in your country?
- What would be topics and/or formats of interaction with your country?
- How could communication among countries (including via the European Centre) be improved?



@euro.centre.org



European Centre for Social Welfare Policy and Research

Berggasse 17, 1090 Vienna, Austria

+43 1 319 45 05-0

ec@euro.centre.org