



From pilot projects to upscaling

Findings and policy recommendations from selected projects

Sonila Danaj, Leonard Geyer, Selma Kadi, Anette Scoppetta, Cassandra Simmons, Eszter Zolyomi

11 October 2023

EUROPEAN CENTRE FOR SOCIAL WELFARE POLICY AND RESEARCH

GENERAL
ASSEMBLY



2023

Overview

Upscaling is important for

- Using experiences in **a wider context**
- Ensuring **sustainability** of projects
- Increasing the **impact** of a project

4 ways of upscaling from pilot projects:

At the end of a project

- End of project upscaling (Info-POW)
- Disseminating developed products (DISCOPMB)

After the end of the project period

- Funders engage in scaling-up efforts after the project ended (FELM)
- A regional project aiming to influence the national agenda (Young Carers)

From one project to another

- Upscaling across projects (Rider Survey, Driver Survey, GDPower)

During the project

- Through mutual learning (BB pilot)
- Upscaling to include more countries, pilot survey to long-term survey (COORDINATE)
- Pilot projects and upscaling as parallel processes (InCARE)

Upscaling at the end of a project





Upscaling in the posting of workers

INFO-POW: Assessment of the channels of information and their use in the posting of workers **integrates**

data collection

piloting methodological novelties such as the mapping tool and the posting companies' survey in 5 EU countries

policy implementation assessment

consultations and exchange with national and EU stakeholders



Piloting methodological novelties

Mapping tool + dataset:

The first systematic identification of information channels on the posting of workers

The mapping tool and resulting dataset provide the first systematic identification of existing channels of information on the posting of workers;

Survey

The first survey to gather data on posted companies' information needs, challenges and recommendations

Cross-national comparison and analysis

- multiple indicators
- further development and adjustment

Upscaling potentials

- extension beyond the 5 piloting **countries**
- **policy areas** beyond access to information
- **sectors** beyond construction sector
- utilisation by policymakers and researchers alike in a **user-friendly** and **open access** format



Progress so far

Stakeholders' Online Consultation Workshop

48 participants comprising public authorities, social partners at the national and EU level, and ELA representatives

Publishing the mapping dataset and accompanying documents

Open access at the Austrian Social Science Data Archive (AUSSDA) and shared with ELA

Upscaling event in Bratislava

Participants representing public authorities, social partners at the national and EU level, European Commission and ELA representatives (forthcoming)

ELA Working Group on Information

Sharing our methods and preliminary findings with this working group comprised of national public authorities, social partners and ELA.

Publishing the survey dataset and manual

Open access (forthcoming)

Disseminating developed products

Training materials for diversity sensitive care of older people DI.S.C.O.P.M.B.

Development and piloting

- *Training package* to teach students (health and care professions) knowledge and skills in **diversity-sensitive care for older people with migration background and their families**
- *Online Educational Resources* to improve skills independently of courses

Dissemination

- in participating institutions
- in participating countries (IT, SE, FIN, BE)
- Europe-wide (stakeholder network, European event, Policy Briefs)



Co-funded by
the European Union



DI.S.C.O.P.M.B.

DIVERSITY SENSITIVE CARE OF OLDER PEOPLE WITH
MIGRANT BACKGROUND AND THEIR FAMILIES



Upscaling after the end of the project period



Providing research and analyses to support social partners' efforts

External expertise for the project “FELM” - Better Functioning of the European Construction Labour Market

- EU-level social partners in the construction industry: EFBWW and FIEC
- Main output: Third-country companies and workers in the European construction sector: A regulatory, quantitative, and qualitative analysis
- Regular Steering Group Meetings
- Online seminar with EFBWW and FIEC affiliates
- Final Conference with public authorities, national and EU social partners

European Federation
of Building
and Woodworkers



25th April, 2023

FELM Recommendations

The *Future of the European Labour Market in Construction (FELM)* project, carried out by FIEC and EFBWW with the support of the *European Centre for Social Welfare Policy and Research*, has analysed the impact of third-country national (TCN) companies and workers on the European construction sector.

The project examined the legal framework that allows non-EU workers and companies to access the construction industry, the available statistical data on TCN workers and companies operating in the EU construction sector, and six case studies. Based on these findings, the Social Partners have developed a list of recommendations to address the challenges and opportunities presented by the presence of non-EU workers and companies in the European construction sector.

FELM recommendations, which build on the project's findings and the activities the Social Partners have already carried out, aim to promote a fair and sustainable labour market in construction while ensuring compliance with existing regulations and enhancing social cohesion.

Study conclusions and social partners' recommendations

Key themes

- Data
- Fair competition and public procurement
- Subcontracting
- Labour only suppliers and other intermediaries
- Equal and fair treatment of migrant workers
- Inspectors and inspections
- Attractivity of the sector

FELM

Better Functioning of the
European Construction Labour Market
VS/2021/0011

THIRD-COUNTRY COMPANIES AND WORKERS IN THE EUROPEAN CONSTRUCTION SECTOR: A Regulatory, Quantitative, and Qualitative Analysis

Sonila Danaş
Eszter Zólyomi
Elif Naz Kayran
Leonard Geyer

REPORT
Vienna, April 2023

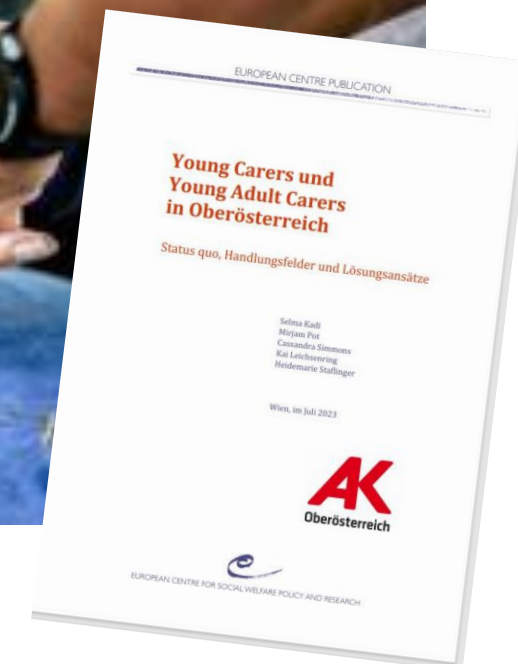
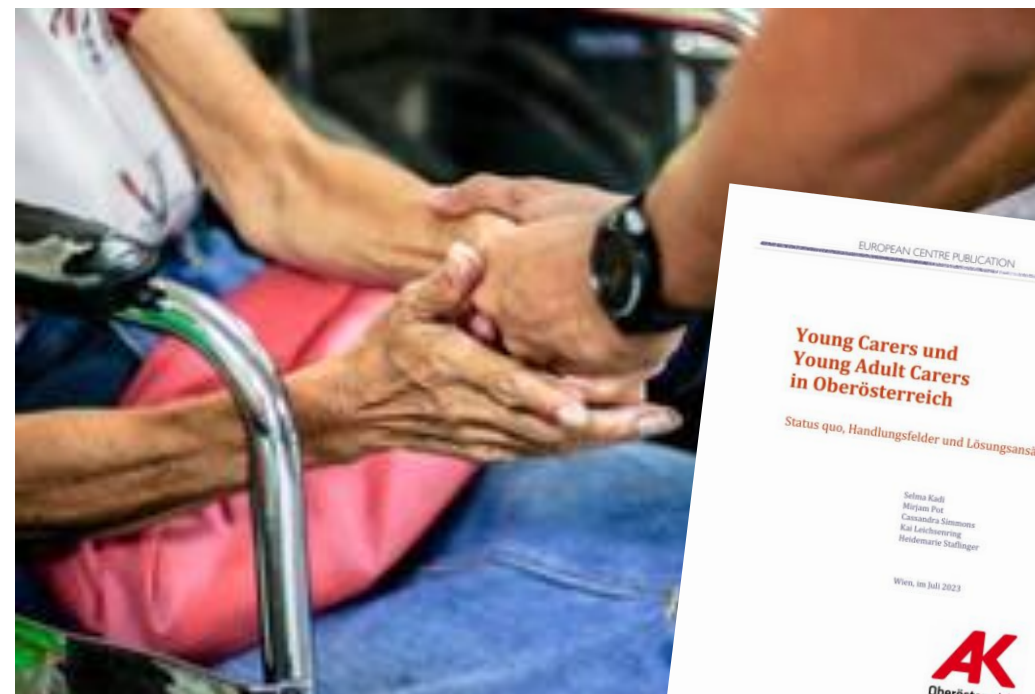


A regional project aiming to influence the national agenda: Young Carers



Young (Adult) Carers in Upper Austria

- Analysis of **extent of phenomenon** based on existing surveys for the age group 16-29 years, **needs and preferences** with a particular focus on vocational guidance, education, training and job entry based on interview study with young carers, young adult carers and experts
- Overview of existing **support measures**, international examples and suggestions for further initiatives, policy recommendations



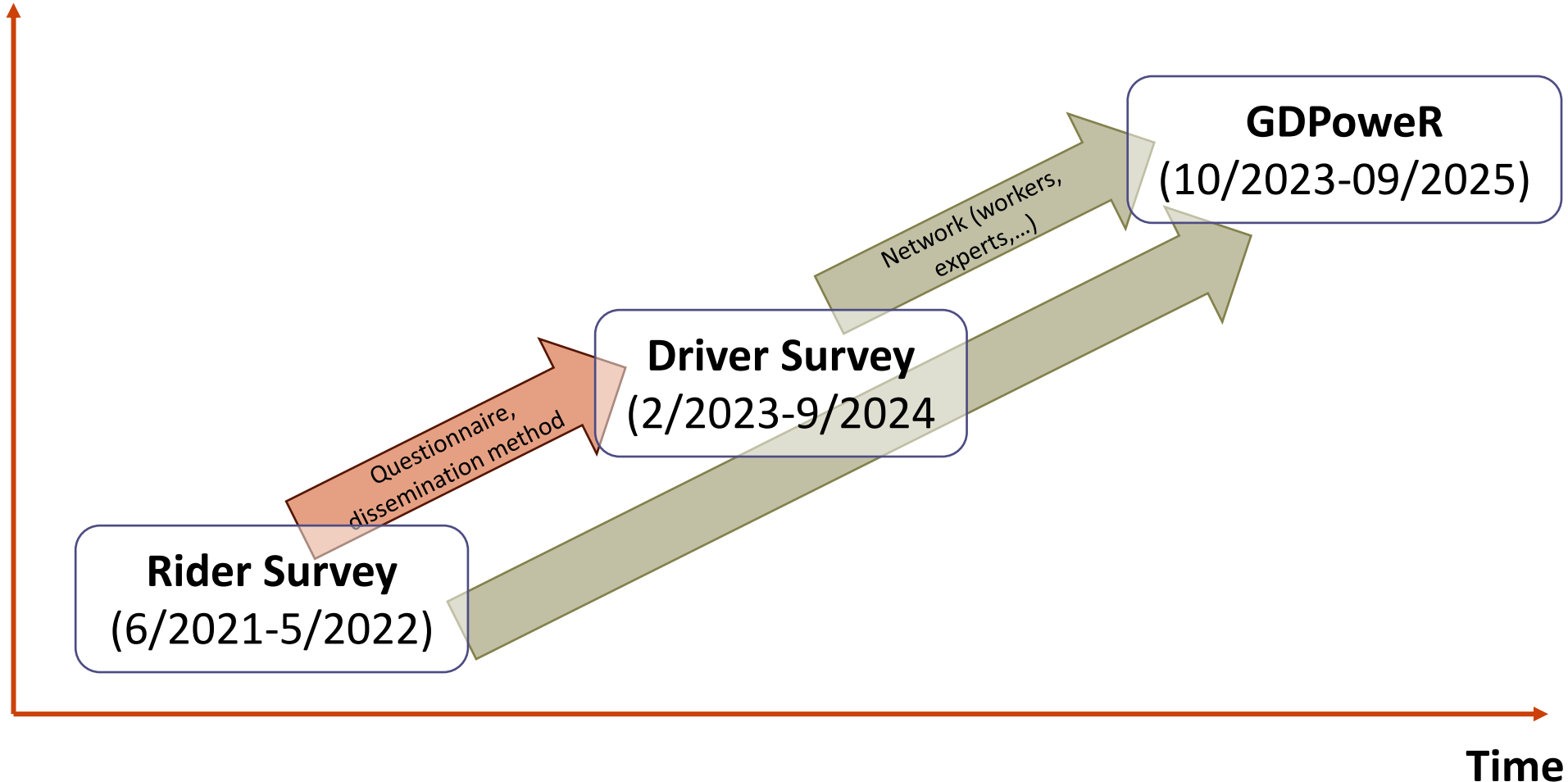
Upscaling from one project to another



Upscaling platform work expertise & experiences

Complexity

(industries,
countries,
partners,...)



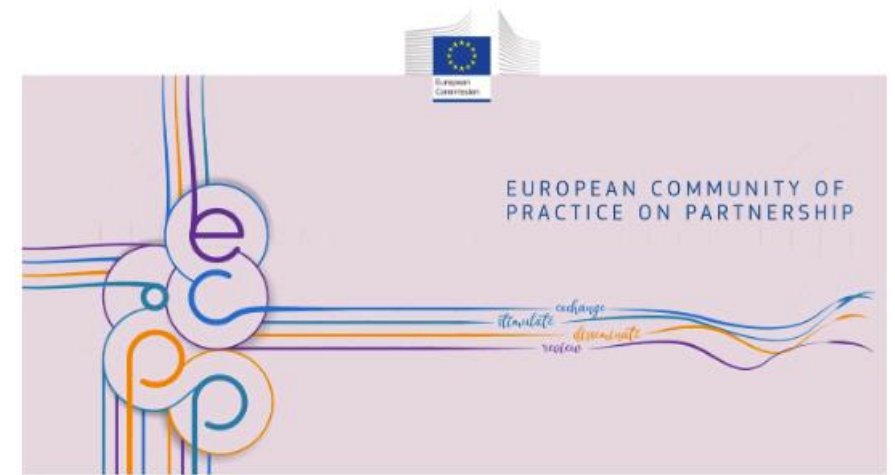
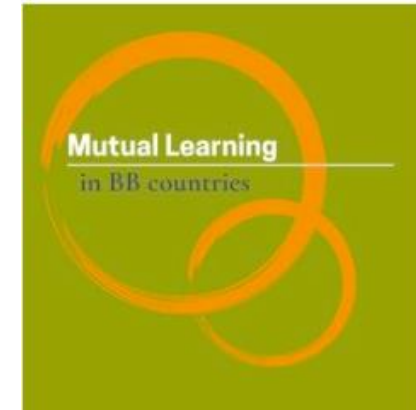
Upscaling during the project



Hands-on pilot in BB countries

Aims

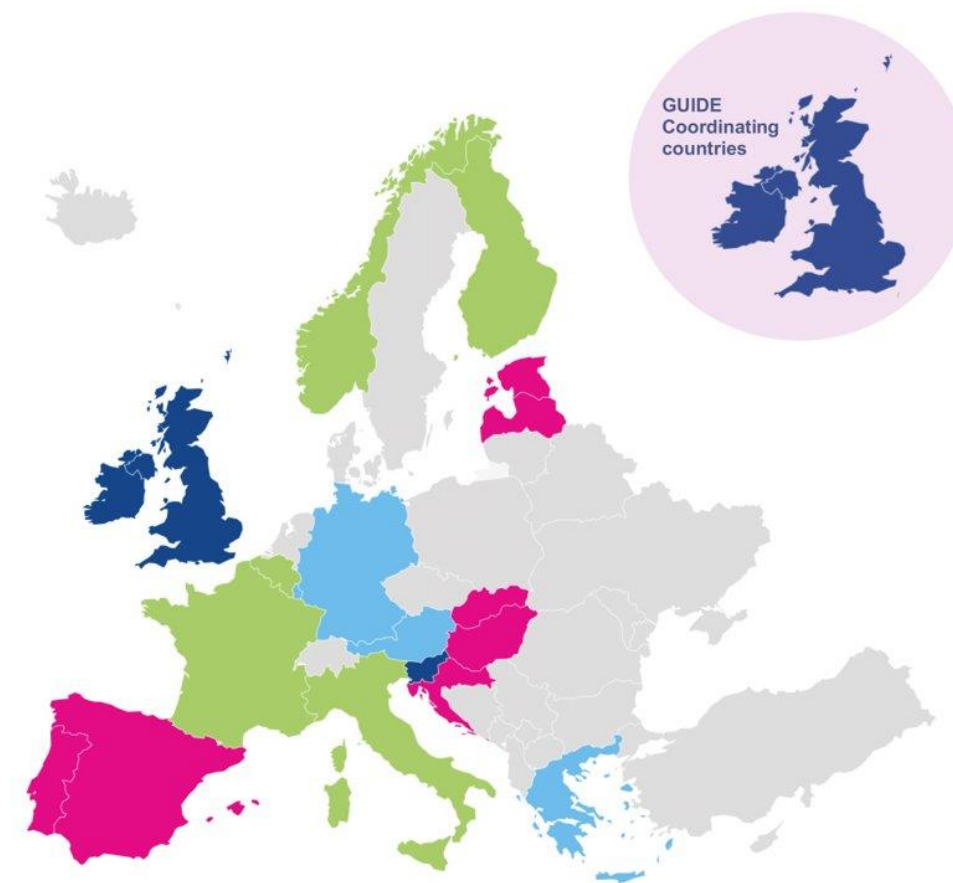
- Piloting the “Implementation of the partnership principle” in BB countries:
 1. Gathering good (and bad) practices
 2. Exchange of existing practices in the BB countries within a mutual learning exchange event (24-25 October 2023)
 3. Following up of the learning and steps agreed to be set in the BB countries
 4. BB Piloting report
- Multi-governance learning across BB and EU



Pilot project: COORDINATE (2021-2025)

- Improve access** To facilitate improved access to existing survey data on child wellbeing and ensure that high quality survey data will inform policies that directly affect children's lives
- Build community** To initiate a community of researchers working to enhance child wellbeing and to extend the Growing Up in Digital Europe (GUIDE/Eurocohort) survey network
- Initiate European birth cohort pilot** Begin the first ever Europe-wide birth cohort pilot survey to track children's wellbeing as they grow up using a harmonised instrument and research design in key European countries

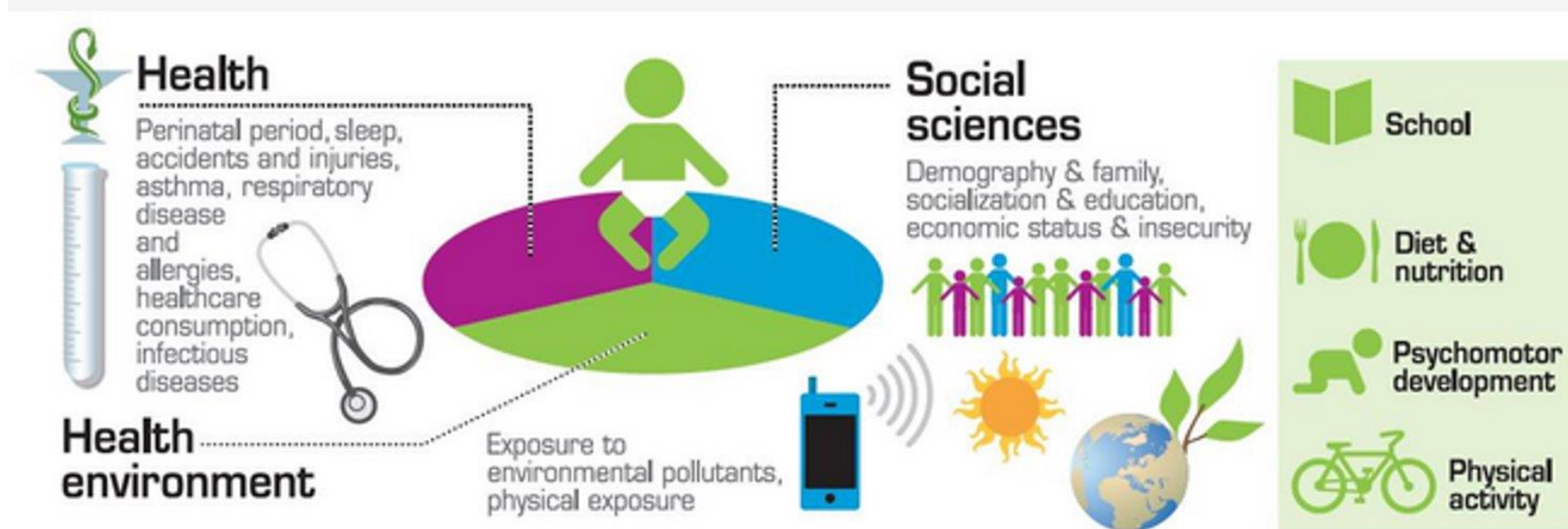
-  GUIDE Partner Forum Member
-  GUIDE Partner Forum Member & Financial Commitment
-  GUIDE Partner Forum Member & Political Support
-  GUIDE Partner Forum Member, Political Support & Financial Commitment



This project has received funding from the European Union's Horizon 2020 research and innovation programme under grant agreement No 101008589

COORDINATE: Piloting & intended upscaling (2023)

- Piloting of survey: 4 countries (Ireland, Croatia, France & Finland)
- 2 more countries over the next year (Slovenia, Italy)
- Training of (future) survey analysts
- Some challenges, but all important learnings!
- Intention to scale up across other countries



COORDINATE: Piloting & upscaling eventually in Austria

- No comparable data collection instruments yet in Austria to the rest of European countries
- Policy context: EU Child guarantee, Austrian Youth Strategy (2020-2024), Vienna Children and Youth Strategy (2020-2025), among others
- Growing interest (among academics, NGOs and policymakers)
- Building the network here in Austria, with intention to initiate pilot in near future



Pilot projects and upscaling throughout the project



Development
and
implementation
of services

Multi-stakeholder participatory processes:

- Theory of change process to adapt social innovations to the local context for pilot projects

Pilot projects:

- Austria: Improving integrated community-based long-term care in Styria
- Spain: Support for family caregivers of people with dementia within an integrated service approach
- North Macedonia: Emergency button Service

Dissemination

Evaluation

Evidence base for developing LTC policy and services:

- Online survey on attitudes, experiences and expectations regarding LTC
- Country-specific situational analyses, country-specific SWOT analyses
- Development of country-specific roadmaps with recommendations based on simulation models of future LTC costs

Support for LTC
system
development

Transnational learning communities:

- Online trainings
- Study visits in the Netherlands and Austria



Co-funded by
the European Union

InCARE results and potentials for upscaling



... successful implementation of
3 pilot projects on community-
based long-term care

... adaptation of social
innovations to the local
context & current policy
developments by
involving relevant
stakeholders

... an expanded
evidence-base for
developing LTC systems,
including policy
roadmaps with input
from policy partners

- Training material to be used across the country
- Experiences to be shared across the LTC systems
- Policy recommendations to be upscaled regionally and nationally

Conclusions

Sustainability can be built into projects through different mechanisms:

- Collaboration across different levels
- Using piloting for assessment of specific contexts, needs, feasibility of eventual upscaling
- Ensuring sufficient resources (human capital, financial resources)

Which strategies to increase the sustainability of projects can be recommended?

4 ways of upscaling from pilot projects:

At the end of a project

- End of project upscaling (Info-POW)
- Disseminating developed products (DISCOPMB)

After the end of the project period

- Funders engage in scaling-up efforts after the project ended (FELM)
- A regional project aiming to influence the national agenda (Young Carers)

From one project to another

- Upscaling across projects (Rider Survey, Driver Survey, GDPower)

During the project

- Through mutual learning (BB pilot)
- Upscaling to include more countries, pilot survey to long-term survey (COORDINATE)
- Pilot projects and upscaling as parallel processes (InCARE)



@EuroCentre_SWPR



European Centre for Social Welfare Policy and Research

Berggasse 17, 1090 Vienna, Austria

+43 1 319 45 05-0

ec@euro.centre.org