



# From research evidence to policy making

Findings from projects commissioned to  
inform policy making

Michael Fuchs, Sabina Gjylsheni, Elif Naz Kayran, Cassandra Simmons, Felix Wohlgemuth

**10 October 2023**

EUROPEAN CENTRE FOR SOCIAL WELFARE POLICY AND RESEARCH

GENERAL  
ASSEMBLY



**2023**

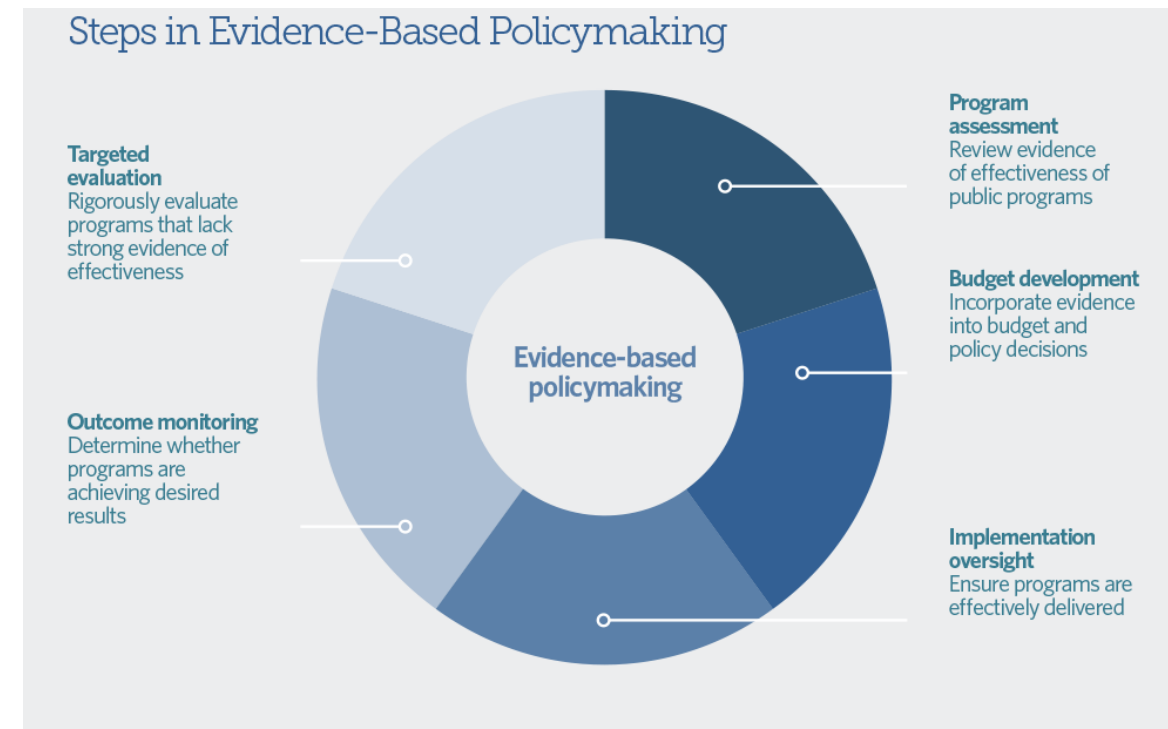
# Content

- Introduction and brief presentation of selected projects
- Selected findings of / experiences in three themes:
  1. monitoring policy performance
  2. impact assessment of (proposed) policies
  3. research to inform policymaking
- Discussion / joint reflection

## Introduction

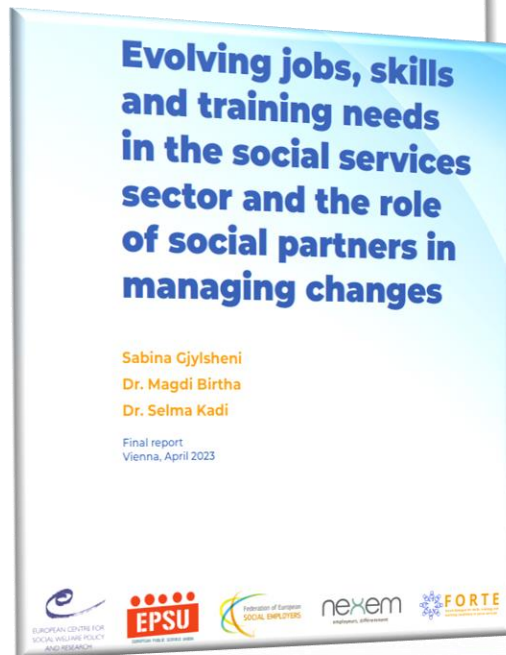
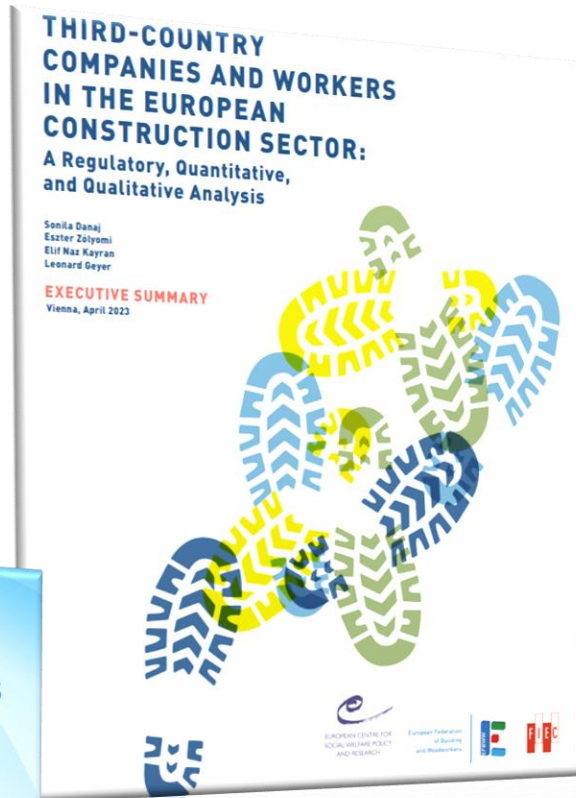
### *“...Forging the evidence-base for social policy making and mutual learning”*

- Important role of research in contributing to policymaking
- Different forms and intentions of research fit differently into the policymaking process
- Requires credible, high-quality, and transparent research

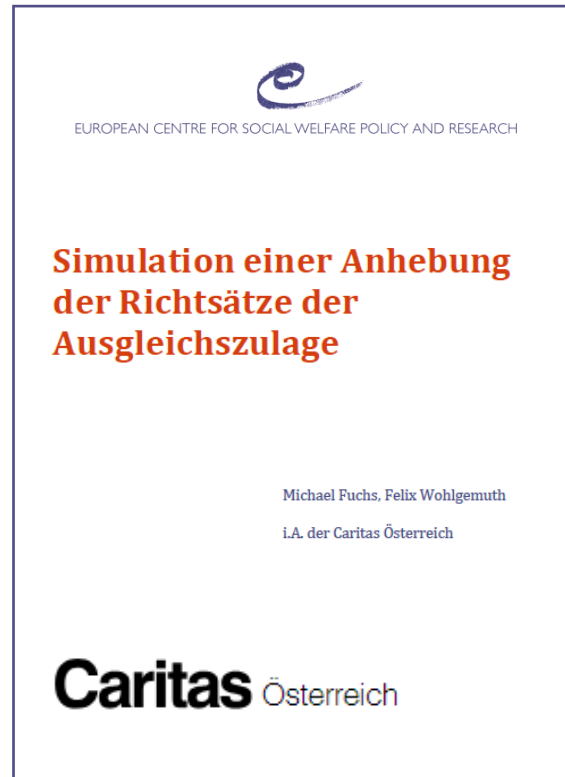


Source: Pew-MacArthur Results First Initiative.  
Available at: <https://www.pewtrusts.org/~media/assets/2014/11/evidencebasedpolicymakingaguideforeffectivegovernment.pdf>

## Introduction - II



- FELM: Better Functioning of the European Construction Labour Market (09/2021-05/2023)
- EIGE Index - Unpaid work: Survey of gender gaps in unpaid care, individual and social activities (12/2021-12/2022)
- EPSU-Social Services: Research on evolving jobs, skills, and training needs in the social services sector and the role of social partners in managing changes (11/2022-05/2023)
- PETI Committee: Report on targeted measures for persons with disabilities to cope with the cost-of-living crisis (06/2023 - 09/2023)



- Simulation of an introduction of a basic security for children in Austria (08/2022-04/2023)
- Simulation of an increase of the minimum pension top-up in Austria (12/2022-05/2023)
- EDE: Ad-hoc synthesis report on “Disability relevance of quality assurance systems in social services” (01/12/2021 - 30/06/2023)

# 1. Monitoring policy performance

- Developing data collection instruments
- Carrying out data collection for the purpose of monitoring performance (of policies) over time
- Example in the session: EIGE Index unpaid work

## Monitoring policy performance

### EIGE\_Index\_Unpaid\_work

## Survey of gender gaps in unpaid care, individual and social activities

- Commissioned by the **European Institute for Gender Equality** (2021-2022)
- Online survey on gender gaps in unpaid care, individual and social activities (+ environmental behaviour)
- Representative data collection of over **60.000 observations** via online panel survey covering 16-75 population in all EU Member States
- Intention: **regular collection of data to inform monitoring of EU-level strategies**

<b>1</b>	To improve the capacity of the Gender Equality Index to capture changes in the domain of Time in a more conceptually sound, coherent and regular way.
<b>2</b>	To support the monitoring of the EU Gender Equality Strategy 2020-2025, in particular in its priority area on closing the gender care gap.



## 2. Impact assessment of (proposed) policies

- Projects to investigate impact of a policy proposal or to conduct an evaluation of an implemented policy
- Often commissioned by the Austrian Ministry for Social Affairs (BMSGPK) or NGOs (2022/23: Volkshilfe Austria, Caritas Austria)
- Examples in this session from 2022/23:
  - Simulation of an introduction of a basic security for children
  - Simulation of an increase of the minimum pension top-up
  - Updating the web-based microsimulation tool SORESI



## Impact assessment of (proposed) policies

### Targets and (political) outcomes

- Basic Security for Children
  - Bundling of transfers, higher take-up, higher support, lower admin costs
  - Good media coverage, adopted by some political parties, disaggregated analysis for some Federal States
- Increase of Minimum Pension Top-Up
  - Universal role in welfare system: pensioners, social assistance, unemployed
  - Good media coverage, results discussed with City of Vienna and ministerial representatives
- Update SORESI
  - Freely available online tool to simulate planned/hypothetical reforms
  - Used by government representatives, NGOs, think tanks, broader public
  - Part of the ministerial impact assessment, media coverage of simulation results

## The impact of impact assessment ...

## Basic Security for Children

**Volkshilfe Österreich** @volkshilfe · Apr 25

Was kostet uns ein Österreich ohne #Kinderarmut? 4,6 Mrd. Euro. Das hat unsere Neuberechnung der #Kindergrundsicherung ergeben, die wir heute gemeinsam mit dem Europäischen Zentrum für Wohlfahrtspolitik und Sozialforschung präsentiert haben.

[Show this thread](#)



KINDERGRUNDSICHERUNG

## Was kostet ein Österreich ohne Kinderarmut?

volkshilfe.



**DERSTANDARD**

Wirtschaft > Wirtschaftspolitik International Inland Web Sport Panorama mehr...

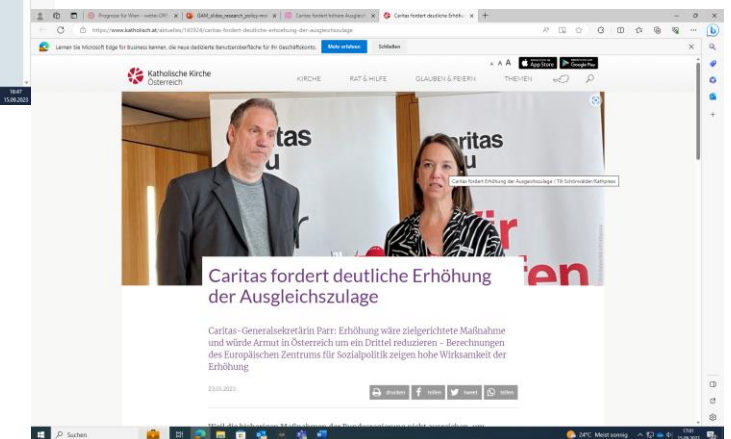
### LEBEN IN ARMUT

## Kann eine Grundsicherung die Kinderarmut abschaffen?

Eine Kindergrundsicherung könnte die Armutsgefährdung unter Kindern und Jugendlichen zumindest drastisch senken. Die Kosten für den Staat sind vergleichsweise überschaubar

25. April 2023, 19:36, 534 Postings

## Increase Minimum Pension Top-up



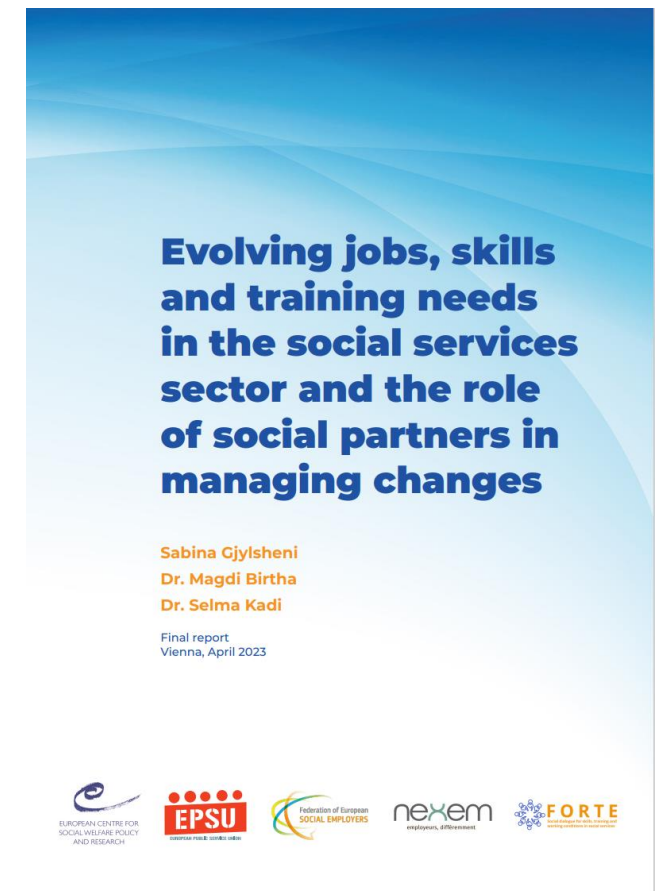
### 3. Research to inform policy making

- Projects could be commissioned by European-level organisations/actors, European Commission or any other national actor
- The main goal of the projects is to get a better understanding of the state of the issue for better policy-making.
  - Building the knowledge base for evidence-based policy-making
- Establishing the link between research and practice.
- Examples in this session: EPSU, FELM, PETI Committee, EDE

## Research to inform policy making

### Evolving jobs, skills and training needs in the social services sector

- Commissioned by the **European Public Service Union** and the **Federation of European Social Employers**
- **Qualitative interviews** with national stakeholders **from 8 EU Member States**, including representatives of employers and workers' organizations in social care service sector (AT, FR, BE, DE, NL, RO, FI, and MT)
- **4 EU-level interviews** with relevant stakeholders from service user groups (European Disability Forum, AGE Platform Europe, Eurochild) and CEDEFOP

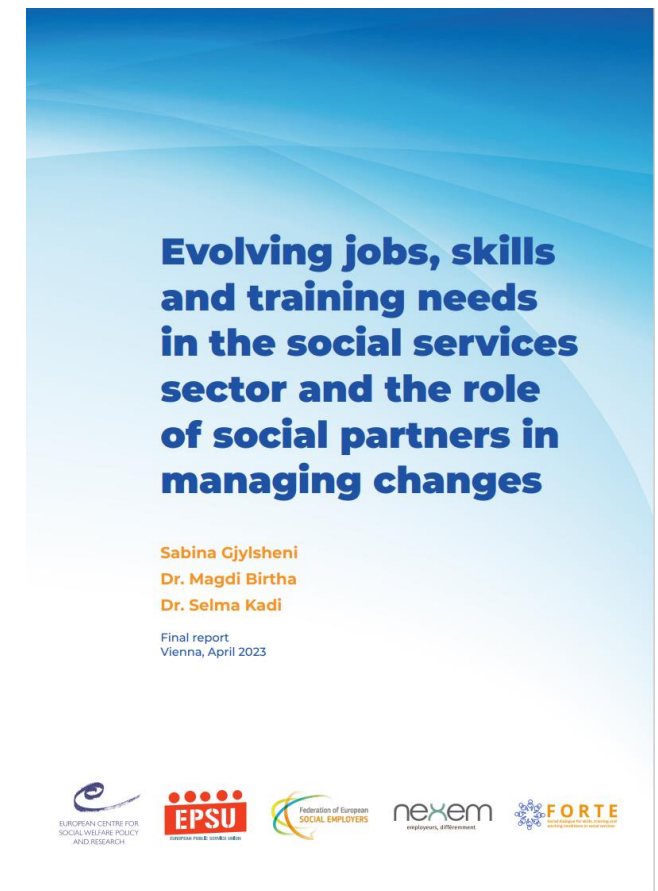


## Research to inform policy making

### Evolving jobs, skills and training needs in the social services sector

#### The study offers

- Valuable insights into the current challenges of the social services sector regarding **skills and training needs of workforce**
- Highlights relevant sector-specific challenges and opportunities to **improve the quality of care**
- A **multi-stakeholder perspective**, by gathering data from representatives of service providers (employers), and staff in social services (workers) to explore the role of social dialogue in improving skills



## Research to inform policy making

### Third-country companies and workers in the European construction sector



- European social partners of the construction industry:  
The European Federation of Building and Woodworkers (EFBWW) + the European Construction Industry Federation (FIEC)
  - Joint decision to focus on the third-country companies and workers in the EU in the construction industry
- To understand these developments and collect the evidence basis for joint social partner recommendations, EFBWW and FIEC implemented the project, and the European Centre was contracted to conduct the research
- The European Centre worked very closely with the social partners with multiple rounds of feedback loops and routine meetings throughout the project



## Research to inform policy making

### Third-country companies and workers in the European construction sector



- Social partners also contributed to facilitate the research activities
- The final project event of the project brought together European and national level relevant stakeholders both for discussion and dissemination of the project findings on the topic
- As a result of the project findings which culminated in a report, the two social partners have jointly produced joint recommendations for the future of the European construction sector

# Reflections

- Challenges faced regarding methodologies applied
- Lessons learnt on results
- Experiences of cooperation with contractors and related stakeholders
- Experiences with dissemination results





# Thank you!



@EuroCentre\_SWPR



European Centre for Social Welfare Policy and Research

**Berggasse 17, 1090 Vienna, Austria**

**+43 1 319 45 05-0**

**[ec@euro.centre.org](mailto:ec@euro.centre.org)**