



The first Europe-wide
longitudinal study of children

Growing Up In Digital Europe (GUIDE)





GUIDE – a comparative European longitudinal study of child wellbeing

Gary Pollock

Manchester Metropolitan University

European Centre for Social
Welfare Policy and Research

Vienna

Webinar: 29th June 2023



This project has received funding from the European Union's Horizon 2020 Research and Innovation programme under the Agreements 777449, 101008589 & 101078945



Growing Up in
Digital Europe

GUIDE research design

Current activities and future phases of GUIDE

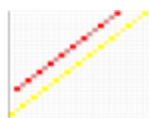


Growing Up in
Digital Europe

Building the largest social science research infrastructure in Europe



GUIDE



FP7 Concept
development:
MYWeB 2014 -
2016

H2020 design
study ECDP
2018 – 2019

H2020
COORDINATE
2021 - 2025



2021 ESFRI
Roadmap

ERIC status

Horizon Europe
GUIDEPREP
2022 – 2026

ESFRI
implementation
and operation
phases 2027 -
2053

Survey based RIs across Europe



Survey of Health,
Ageing &
Retirement in
Europe



European Social
Survey



Generations &
Gender
Programme



Growing Up in
Digital Europe



Growing Up in
Digital Europe

International Conference on Research Infrastructures, 2022 Brno

I C R I
2 0 2 2

The European Survey Research Infrastructure Landscape: A Resource for Science and Policy

21. 10. 2022, 14:00 - 15:30
SIDE EVENT

PERU Policy Evaluation
& Research Unit



Manchester
Metropolitan
University



This project has received
research and innovation



Growing Up in
Digital Europe

Survey data over the life course



[About Us](#) [The Network](#) [Events](#) [Research](#) [Resources](#) [Study & Career](#)



[Home](#) / [Research](#) / [Policy Briefs](#)

[PopDigests](#)

[Policy Briefs](#)

[Discussion Papers](#)

[Policy Insights](#)

[Books and Reports](#)

[Yearbook](#)

Policy Brief

Securing High-quality Data on Populations

Why we need EuroCohort, GGP and SHARE in Europe

Evidence-based policy requires high-quality data. Fortunately, we are living through a data revolution, which is opening up new opportunities for better quality data to feed into the policymaking process. There is an increasingly diverse range of data to help inform policy. Data from censuses and population registers, as well as from surveys, biomarkers, digital trace data and genetic data can help us triangulate and deepen our understanding of populations. However, when there is such a vast amount of data available, there is a danger that we end up drowning in numbers.



Growing Up in
Digital Europe

Why do we need GUIDE?



Why we need GUIDE

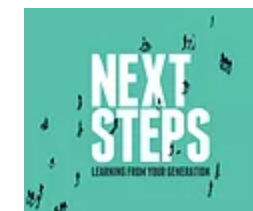


Mother and Child
Cohort Study
Norway



**Growing Up
in Ireland**
National Longitudinal
Study of Children

UNICEF, Innocenti,
Italy



United Kingdom



Netherlands



Germany



Danish
Longitudinal Study
of Youth



Growing Up in
Hungary



Danish National
Birth Cohort Study



ELFE: French
Longitudinal Study
of Children



Growing Up in
Digital Europe

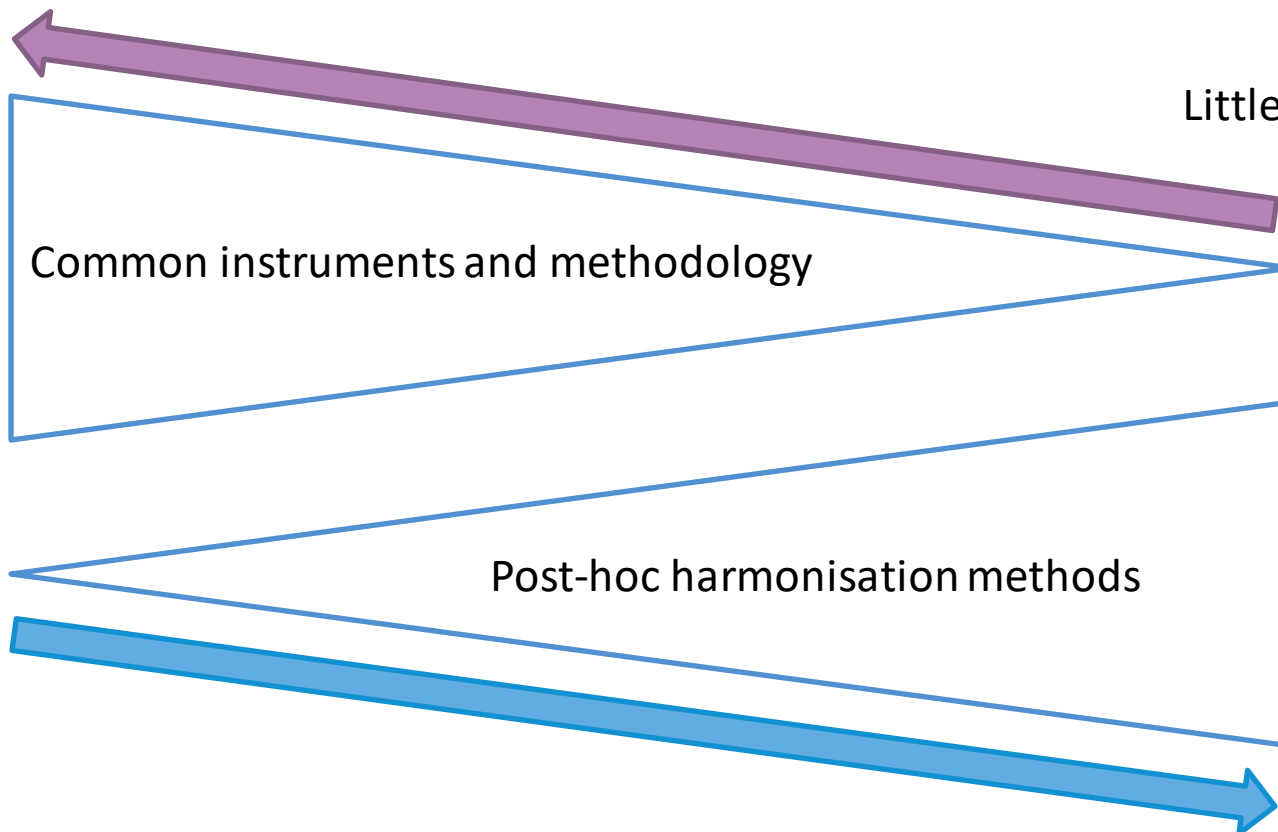
Survey comparability

GUIDE

Fully harmonised
High comparability

Previous Studies

Little attempt to harmonise
Low comparability





Growing Up in
Digital Europe

GUIDE overview of research design



Growing Up in
Digital Europe

GUIDE methodology

Questionnaire content is policy focused

Input harmonized for comparative analysis

- Common questionnaires
- Common data collection procedures and time frame

Children and young people involved in the design

Accelerated cohort design

- Cohort 1: 8-year-old children and their main carer
- Cohort 2: 9-month-old children and their main carer

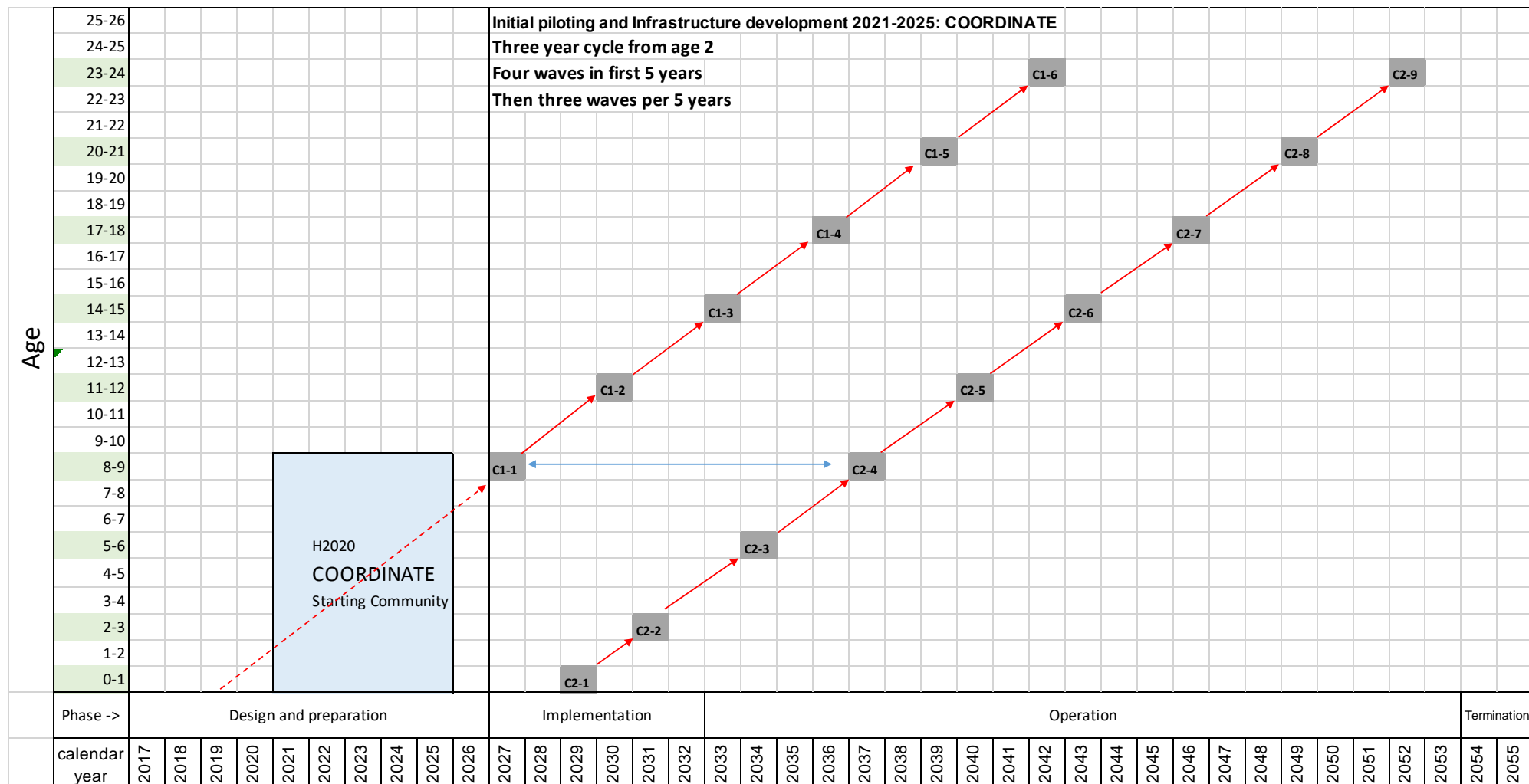
Nationally representative samples

Open access to data



Growing Up in
Digital Europe

GUIDE fieldwork schedule



Wave 1

COVID Cohort 1: Child Cohort (8 years old)

Child Questionnaire

- 1 Psychological well-being
- 2 Emotional wellbeing
- 3 Physical wellbeing
- 4 Social wellbeing
- 5 Family and home
- 6 Friendships
- 7 School
- 8 Neighbourhood
- 9 Material conditions
- 10 Activities
- 11 Health
- 12 Children's rights and voice

Parent Questionnaire

- 1 Household Information
- 2 Socio-Demographics
- 3 Childcare, Parental Support and Parenting
- 4 Child's Education
- 5 Child's Activities
- 6 Pregnancy and Birth
- 7 Child's Health and Well-Being
- 8 Health and Well-Being
- 9 Employment and Socio-Economics
- 10 Housing, Neighbourhood and Community

Cohort 2: Birth (9 months)

Parent Questionnaire

- 1 Household Information
- 2 Socio-Demographics
- 3 Childcare and Parental Support
- 4 Child Functioning and Relationships
- 5 Baby's Development and Habits
- 6 Pregnancy and Birth
- 7 Baby's Health and Nutrition
- 8 Health and Well-Being
- 9 Employment and Socio-Economics
- 10 Housing, Neighbourhood and Community

Digital life

Long term plan – education

<i>Child's Age</i>	9m	2y 9m	5y 9m	8y 9m		11y 9m		14y 9m		17y 9m	20y 9m	23y 9m
<i>Cohort 1 Wave</i>				1		2		3		4	5	6
<i>Cohort 2 Wave</i>	1	2	3	4		5		6		7	8	9
Theme												
	Parent	Parent	Parent	Child	Parent	Child	Parent	Child	Parent	Child	Child	Child
Education												
Education Level												
School												
Parental Involvement												
Perception of Performance and Aspirations												
Learning Difficulty												
Bullying												



Growing Up in
Digital Europe

Sample design

Probability sample

- For each cohort, a sample of children resident in the country within the relevant **one-year age** range

Sample design

- Varies between countries and cohorts, to recognise **national availability**, adhering to common principles and parameters

Common prescribed level of statistical precision

- For each national sample design (which will depend on sample size, stratification, selection probabilities and clustering)

Sampling principles, guidelines and parameters

- agreed by the central team, who will work with each national team to develop and approve an acceptable sample design



Sample size

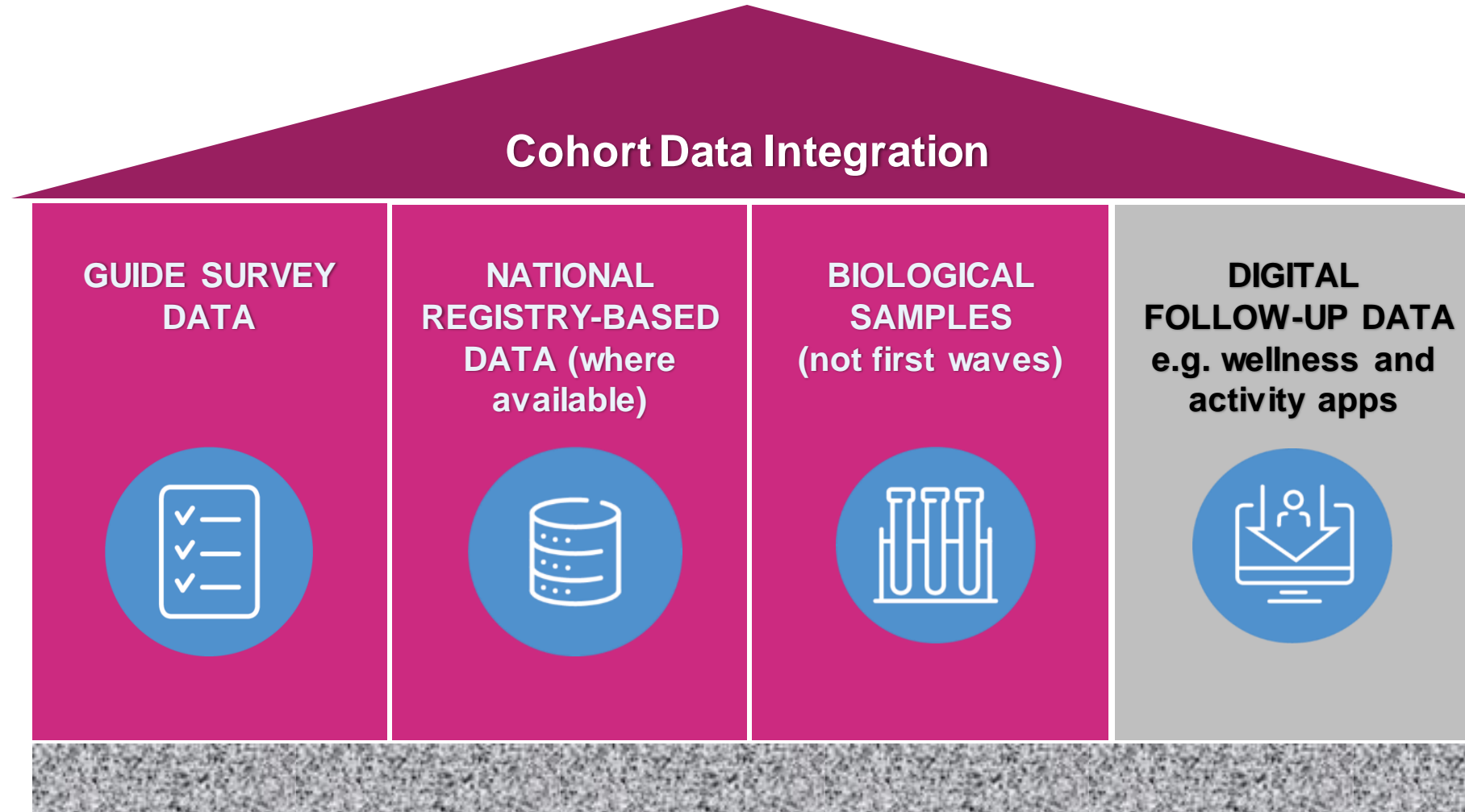
Attrition rates will differ over a 25-year period for both cohorts and between countries. In setting the **initial target sample sizes** for each cohort it is necessary to anticipate likely levels of attrition in such a way as to ensure that the **later data collection waves retain sufficient respondents for inferential statistical analysis**

We propose that wave 1 **minimum effective sample size** should be set at **10,000** for the birth cohort (C2) and **8,000** for the childhood cohort (C1), with a waiver for the **smallest countries**, where demographic data will inform effective sample sizes



Growing Up in
Digital Europe

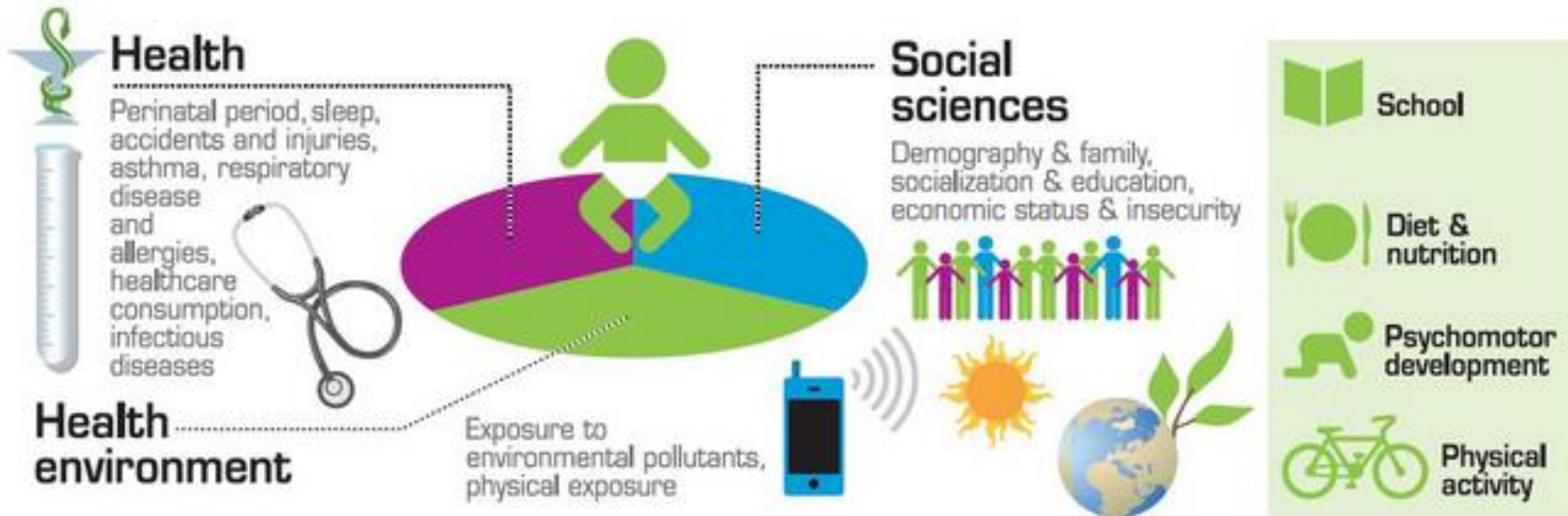
Potential GUIDE survey data integration





Growing Up in
Digital Europe

Multidisciplinary





Growing Up in
Digital Europe

GUIDE Consortium

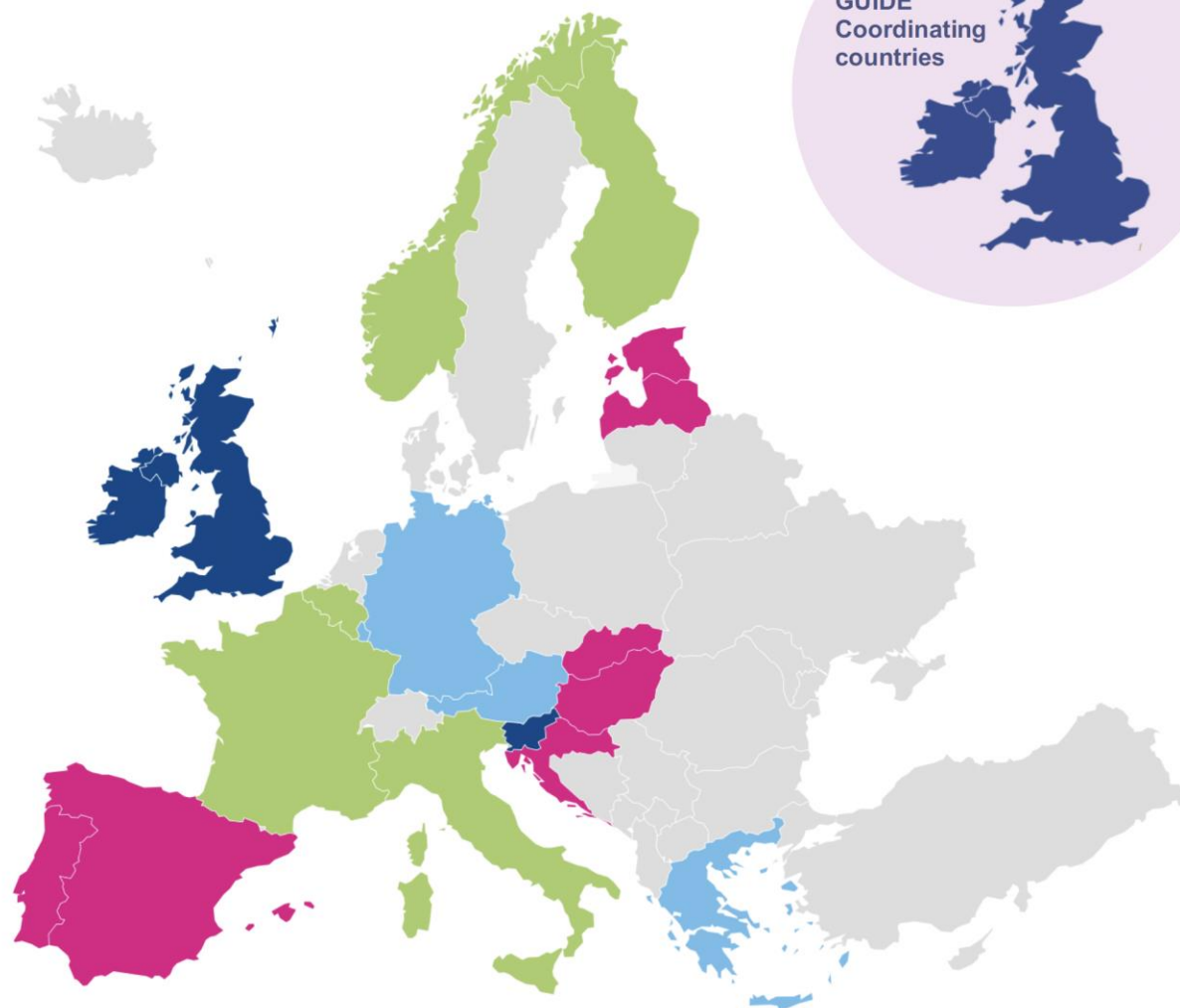


Growing Up in
Digital Europe

- GUIDE Partner Forum Member
- GUIDE Partner Forum Member & Financial Commitment
- GUIDE Partner Forum Member & Political Support
- GUIDE Partner Forum Member, Political Support & Financial Commitment

GUIDE Consortium

23 Partners



20 Countries

Q Search...



COhort cOMmunity Research and
Development Infrastructure Network
for Access Throughout Europe



[Home](#)

[About](#)

[News](#)

[Events](#)

[Transnational visits](#)

[Researchers](#)

[Policymakers](#)

[Participants](#)

[GUIDE](#)

DATA CHILDREN WELLBEING

Initiating a community of
researchers working to enhance
child wellbeing.

Facilitating improved access
to longitudinal survey data
on child wellbeing.

Giving children a voice in
research that concerns them.

Summary of project COORDINATE

“Starting Community” to support child wellbeing using survey data

- Improving *access* to existing data
- Facilitating *networking* with academics, policy makers and funders across Europe
- **Joint research:** pilot survey for the GUIDE project
Croatia, Finland, France, Ireland

<https://www.coordinate-network.eu>

@coordinate_eu



This project has received funding from the European Union's Horizon 2020 research and innovation programme under grant agreement No 101008589



GUIDEPREP



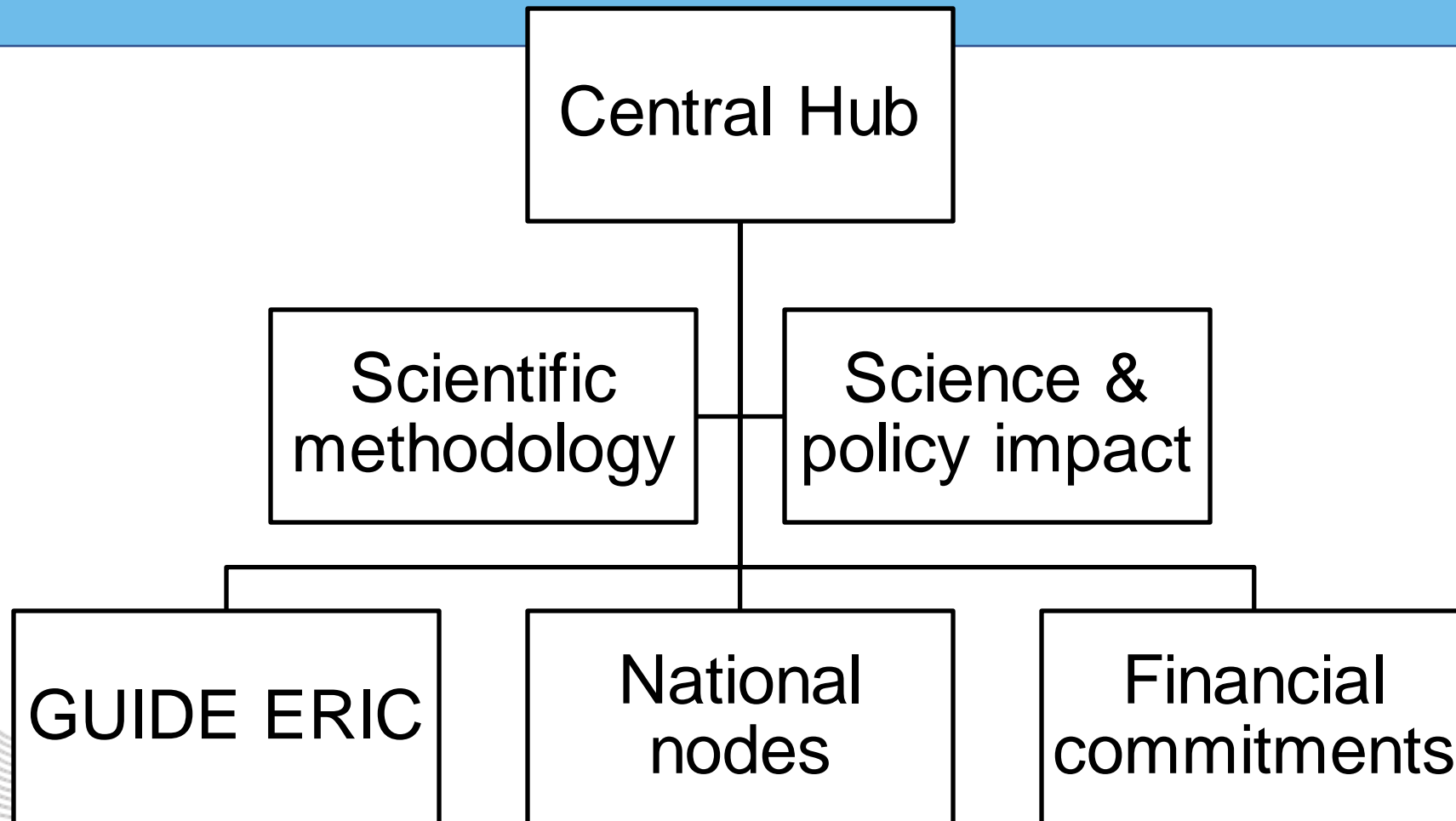
Overview



This project has received funding from the European Union's Horizon Europe Research and Innovation programme under grant agreement No 101078945



GUIDEPREP



GUIDEPREP timeline

	2023	2024	2025	2026
Central Hub & National Node development				
Scientific methods				
Scientific and policy impact				
GUIDE ERIC				
Financial commitments				

