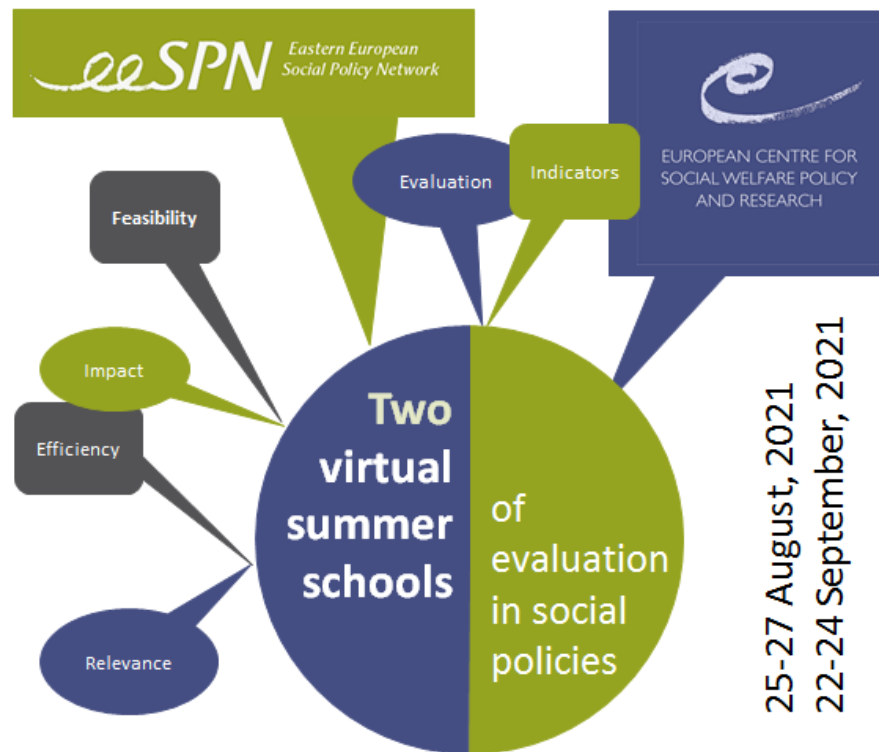


**Summer School of Evaluation in Social Policies**  
as part of the [Bridge-Building](#) function of the  
**European Centre for Social Welfare Policy and Research**  
25-27 August 2021



**Background.** EU countries, EU (potential) candidate countries and countries of the Eastern Partnership face similar public policy challenges such as limited funding for the social and health sector and increase in demand for social and health care and support. This puts pressure on the efficiency of spending and policy accountability. Candidate and aspirant countries need to adapt to EU requirements through on-going public policy reforms. This includes major shifts in social welfare regimes with the general aim of increasing their efficiency, effectiveness, and sustainability. But do these changes have the desired effects, and could they be sustained in the future? To answer these questions, evaluation becomes an important pillar of public policy reform. Advancing the process of reform requires appropriate methodological and operational skills and knowledge. **“Real-world evaluation”** refers to the idea that evaluations take place under budget, time, data, and political constraints (see Bamberger & Mabry 2019). These constraints are at the core of the summer school.

**Objectives.** The 2021 Summer School is aimed at enhancing skills and knowledge in commissioning and/or conducting social policy-oriented Monitoring & Evaluation (M&E) projects and programmes. The Summer School stimulates interactive, participatory, and reflective learning among participants. It brings together professionals to exchange and enhance their knowledge and expertise in M&E, and to contribute to regional cooperation for European integration by:

1. **Capacity building**, by enhancing knowledge and sharing information on the state-of-the-art research and policy practice.
2. **Facilitating the exchange of experiences** among participants. Interactive, hands-on working groups, and practical exercises will foster peer learning.
3. **Developing ideas and proposals** for real world projects, which can contribute to strengthening the M&E approaches in the European region.

The Summer School is organised by the [European Centre for Social Welfare Policy and Research](#). The European Centre is an inter-governmental, UN-affiliated organization located in Vienna, Austria. In its [Bridge-Building](#) function, the European Centre aims at fostering collaboration and mutual learning on social welfare issues between EU, EU (potential) candidate countries and countries of the Eastern Partnership.

**Contact:** Rahel Kahlert, [kahlert@euro.centre.org](mailto:kahlert@euro.centre.org)  
Veronica Sandu, [sandu@euro.centre.org](mailto:sandu@euro.centre.org)

Day	Time	Topic	
Aug 25	<b>Zoom: <a href="https://us06web.zoom.us/j/83268965681">https://us06web.zoom.us/j/83268965681</a></b>		
	9:00-10:30	Welcome by the Director Introductions  Module 1: Evaluation needs and aims in social policy  Real-world evaluation (break-out): What are my evaluation needs?	
	10:30-11:00	Coffee break	
	11:00-12:30	Module 2: How to frame and operationalise an evaluation  Real-world evaluation (break-out): Navigating budget, data, time, and political constraints	
	12:30-13:30	Lunch break	
	13:30-15:00	Module 3: Evaluation standards in social policy  Real-world evaluation (break-out): How to handle competing evaluation criteria, meta-evaluation	
	15:00-15:30	Coffee break	
	15:30-17:00	Hands-on project (small group work): How can standards enhance quality in your organisation?	
	<b>Day</b>		
	<b>Time</b>		
<b>Topic</b>			
Aug 26	<b>Zoom: <a href="https://us06web.zoom.us/j/89848797463">https://us06web.zoom.us/j/89848797463</a></b>		
	9:00-10:30	Module 4: Impact vs. process evaluation  Real-world evaluation (break-out): How to meet levels of evidence	

Aug 26	10:30-11:00	Coffee break
	11:00-12:30	Module 5: Theory of change & logic models  Introduction to digital workspace tools
	12:30-13:30	Lunch break
	13:30-15:00	Module 6: How to develop and use indicators in social policy  Real-world evaluation (break-out): How to develop SMART indicators
	15:00-15:30	Coffee break
	15:30-17:00	Hands-on project (small group work): Designing and integrating indicators in an evaluation
<b>Day</b>		
<b>Time</b>		
<b>Topic</b>		
Aug 27	<b>Zoom: <a href="https://us06web.zoom.us/j/81119693404">https://us06web.zoom.us/j/81119693404</a></b>	
	9:00-10:30	Module 7: Participatory evaluation  Real-world evaluation (break-out): How to engage stakeholders
	10:30-11:00	Coffee Break
	11:00-12:30	Module 8: Evaluation use  Real-world evaluation (break-out): How to ensure that evaluations make a difference
	12:30-13:30	Lunch break
	13:30-15:00	Group presentations and wrap-up  Participation certificate