



**Empower the social, economic and political
inclusion of all, irrespective of age, sex,
disability, race, ethnicity, origin or economic
or other status**

SDG 10.2

Magdi BIRTHA & Veronica SANDU

EUROPEAN CENTRE FOR SOCIAL WELFARE POLICY AND RESEARCH

GENERAL
ASSEMBLY



2019

SDG 10

Reduce inequality within and among countries

Target: 10.2 By 2030 empower the social, economic and political inclusion of all, irrespective of age, sex, disability, race, ethnicity, origin or economic or other status.

Other targets: 10.3 (equal opportunity and outcome inequalities), **10.4** (social policies for better equality) and **10.6** (effective national institutions).

Indicator: 10.2.1 wellbeing of vulnerable groups (people living below 50 % of median income).



Contributions of the European Centre

Research

Towards a rights-based approach to long-term care
Social isolation and loneliness among older people in Europe

Policy support

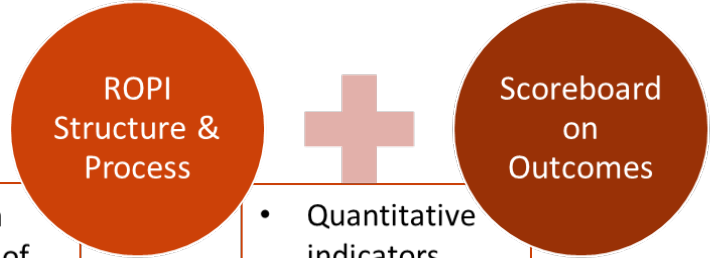
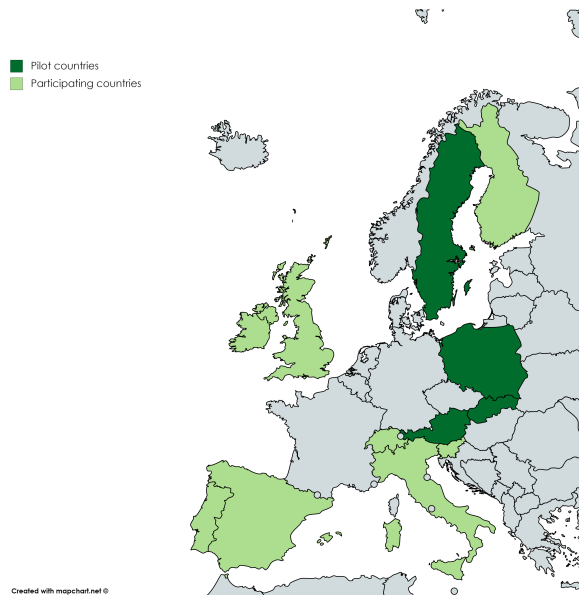
Deinstitutionalisation in Hungary
Support for better social services for the most vulnerable groups
Support the evaluation of the European Disability Strategy 2010-20

Capacity building

Using EU funds for the transition to community-based care
Tackling discrimination of persons with disabilities in labour market
Support for better social services for the most vulnerable groups

Empower the **social**, economic and political **inclusion** of all, irrespective of **age**, sex, disability, race, ethnicity, origin or economic or other status

ROPI – Rights of Older People Index to measure cross-country participation and social inclusion of older people in Europe



- Legislation
 - Allocation of resources
 - Procedures
- Values 1-3 → standardised 0-100 scores
- Country/expert questionnaires
- Desk research
- Geometric mean

- Quantitative indicators
- Standardised 0-100 scores
- Secondary data (surveys, databases)
- Geometric mean

- Comparable
- Available
- Repeatable



Project financed by the Swedish Ministry of Health and Social Affairs

Empower the **social**, economic and political **inclusion** of all, irrespective of **age**, sex, disability, race, ethnicity, origin or economic or other status

Scores and grades for Domain VI Participation & social inclusion

	SE	FI	SI	IE	AT	PT	UK	ES	SK	CH	IT	PL
VI Participation & social inclusion	2.3	2.6	2.6	2.6	2.6	2.3	1.6	2.6	2.3	1.8	2.0	1.8
1.1 Legislation addressing accessibility of public spaces	2	2	3*	2	3	2	2	3	2	3	2	3
1.2 Legislation addressing (de)institutionalisation	3	3	3	3	3	2	1	3	3	1	2	1
2.1 Procedures to ensure accessibility of public spaces	2	3	2	3	2	3	2	2	2	2	2	2

- Good progress on putting in place legal framework
- Less progress in establishing reinforcement procedures
- Less progress in considering specific needs of older population in deinstitutionalization efforts and alternative care

Notes: In Austria, building regulations are within the competence of the Länder (provinces). For Spain, the information in indicator VI.1.1 refers to Madrid.

For Switzerland, the information in indicator VI.1.1 refers to Canton Bern.

*Ranking provided by country experts, but with insufficient information to allow for its full validation.

Score: 3.0-2.6 2.5-2.1 2.0-1.6 1.5-1.0



Source: <https://www.euro.centre.org/publications/detail/3514>

Empower the **social**, economic and political **inclusion** of all, irrespective of **age**, sex, disability, race, ethnicity, origin or economic or other status

Scoreboard on outcome indicators

Scores for Domain VI Participation & social inclusion

Domain	Indicator	SE	FI	SI	IE	AT	PT	UK	ES	SK	CH	IT	PL
VI. Participation & social inclusion	Have access to public spaces										n.a.		
	Not reporting feeling lonely												

Good but to monitor
 To watch
 Weak
 Critical

Empower the **social**, economic and political **inclusion** of all, irrespective of **age**, **sex**, disability, race, ethnicity, origin or economic or other status



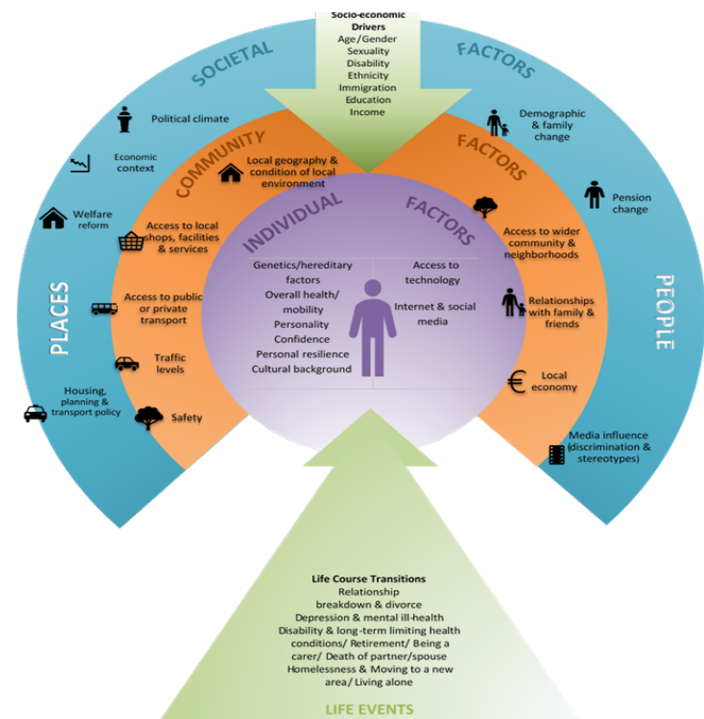
- Mixed outcomes suggest room for improvement, especially in accessibility of public spaces
- Most people did not feel lonely
- Observed gender inequalities in both access to public spaces and not reporting loneliness – clearly disfavouring women

Empower the **social, economic and political inclusion** of all, irrespective of **age, sex, disability, race, ethnicity, origin or economic or other status**

Social isolation and loneliness – evidence on successful policy interventions

- Prevalence of loneliness in old age high and increasing, regions with higher incidence - Eastern Europe and Mediterranean countries
- Factors are complex and differ over the life-course
- No universal solution, intervention should consider adaptability to local context, community approach, active engagement, group intervention

Factors contributing to social isolation and loneliness

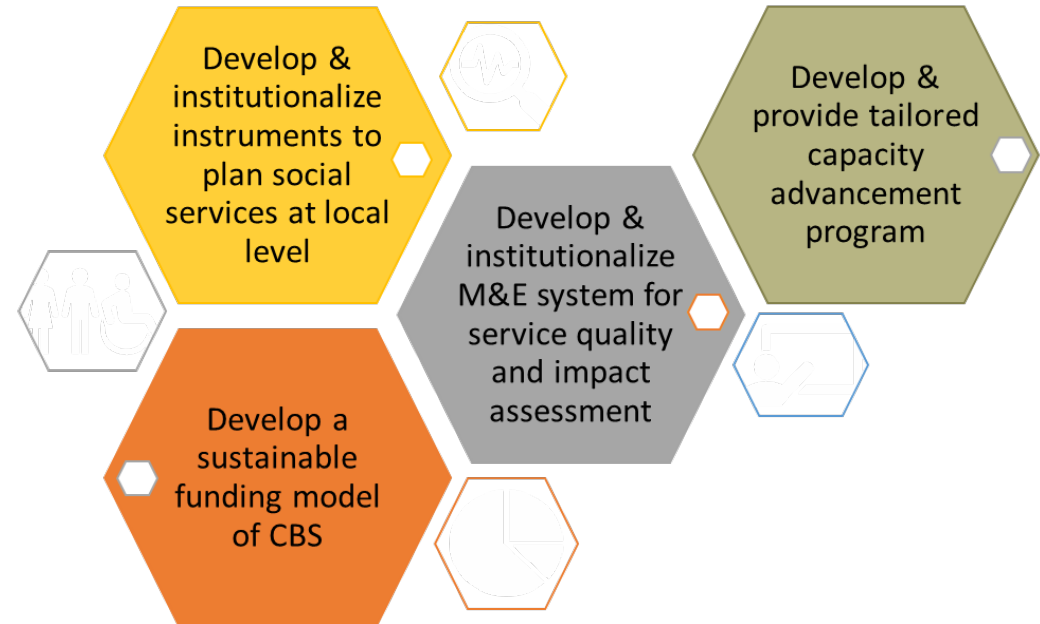


Empower the **social, economic and political inclusion of all, irrespective of age, sex, disability, race, ethnicity, origin or economic or other status**

Support for better social services for the most vulnerable groups in Kosovo, a systemic approach

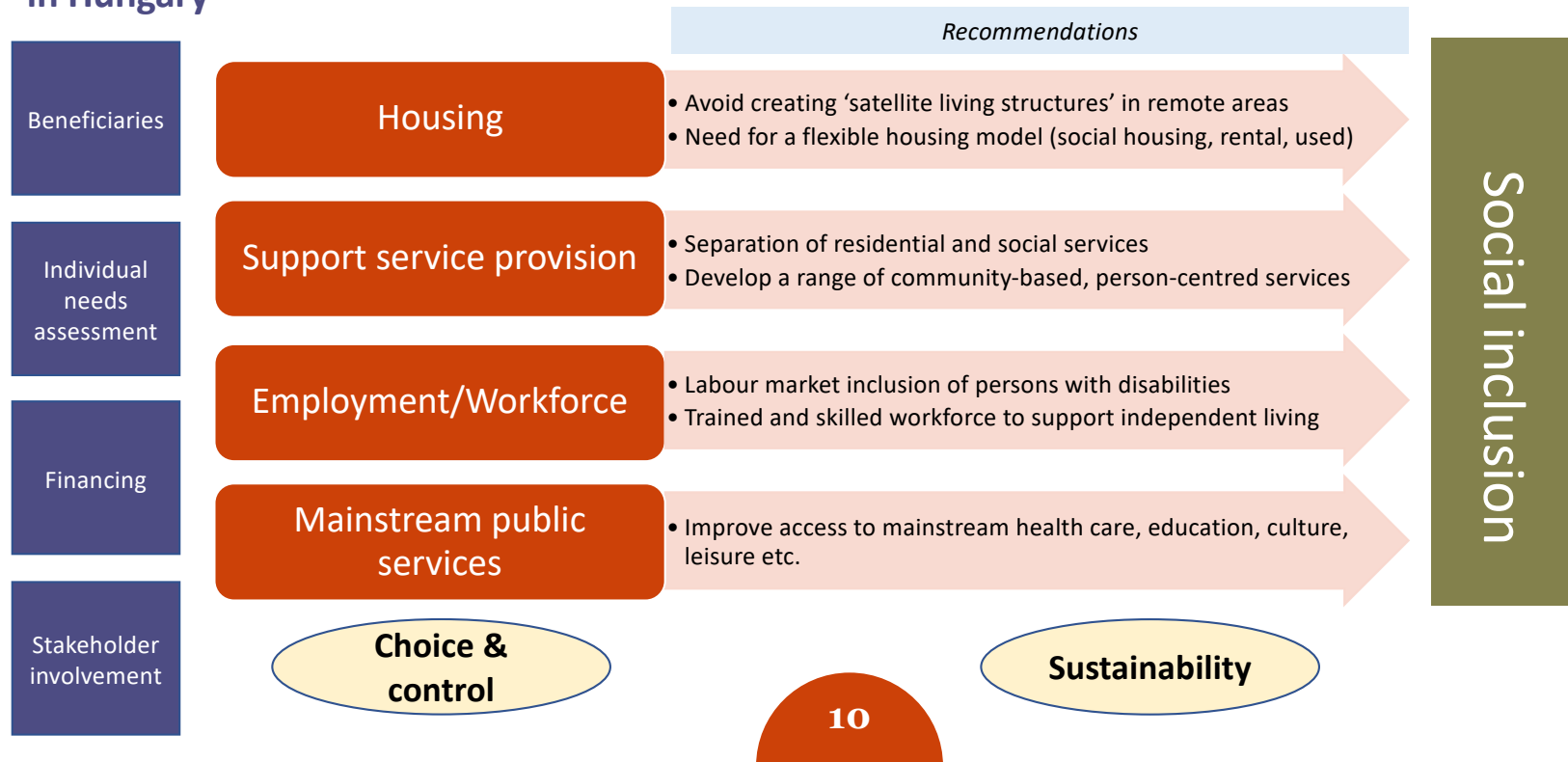
Assumption:

Vulnerable groups in Kosovo have limited access to good quality social services delivered at community level.



Empower the **social, economic** and political **inclusion** of all, irrespective of age, sex, **disability**, race, ethnicity, origin or economic or other status

Assessment of the EU funded process of deinstitutionalisation for persons with disabilities in Hungary



Conclusions

- Involve people affected by the policies in the planning, implementation and monitoring
- Systemic approach to sustainable interventions that aim to reduce inequalities
- Narrow the implementation gap between legislation and policies
- Transform the social system to be more person-centred, community-based
- Encourage and support local solutions

Thank you very much for your attention!

birtha@euro.centre.org

sandu@euro.centre.org